

SOUTH CASS COUNTY TRANSMISSION LINE PROJECT

Indiana Michigan Power representatives plan power grid upgrades to improve electric reliability for customers in southern Cass County. The South Cass County Transmission Line Project involves building approximately 3 miles of 138-kilovolt (kV) electric transmission line.

WHAT

The project involves:

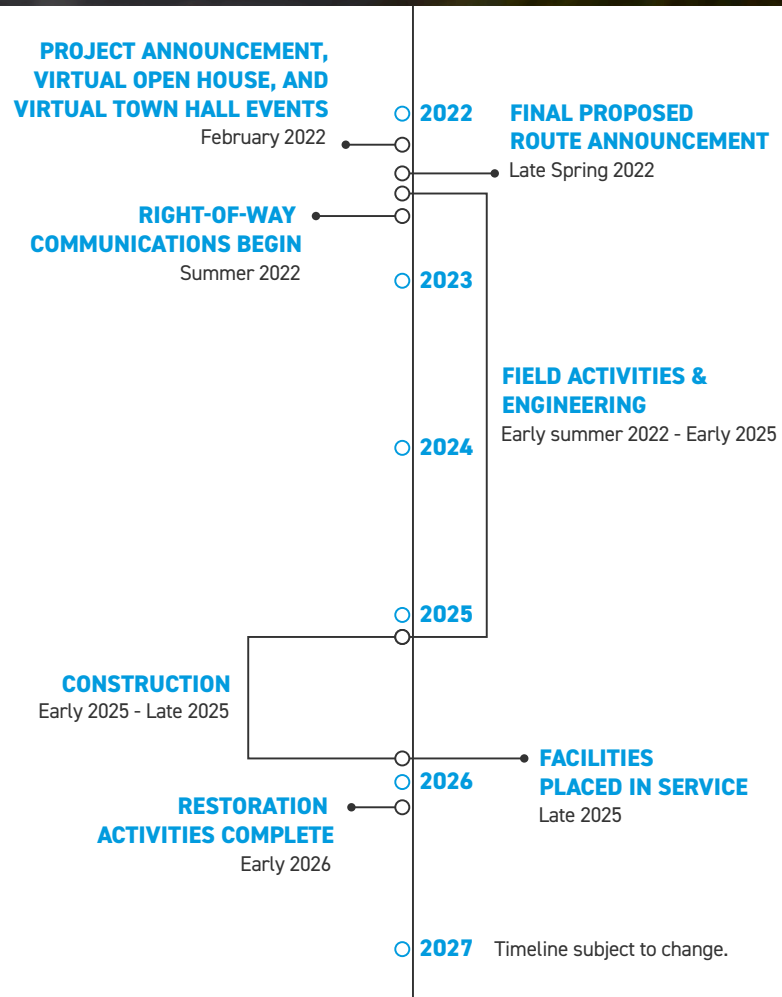
- Building approximately 3 miles of 138-kilovolt electric transmission line connecting Surges Road Substation in Milton Township to an existing transmission line.
- Expanding the existing Surges Road Substation near its current location.

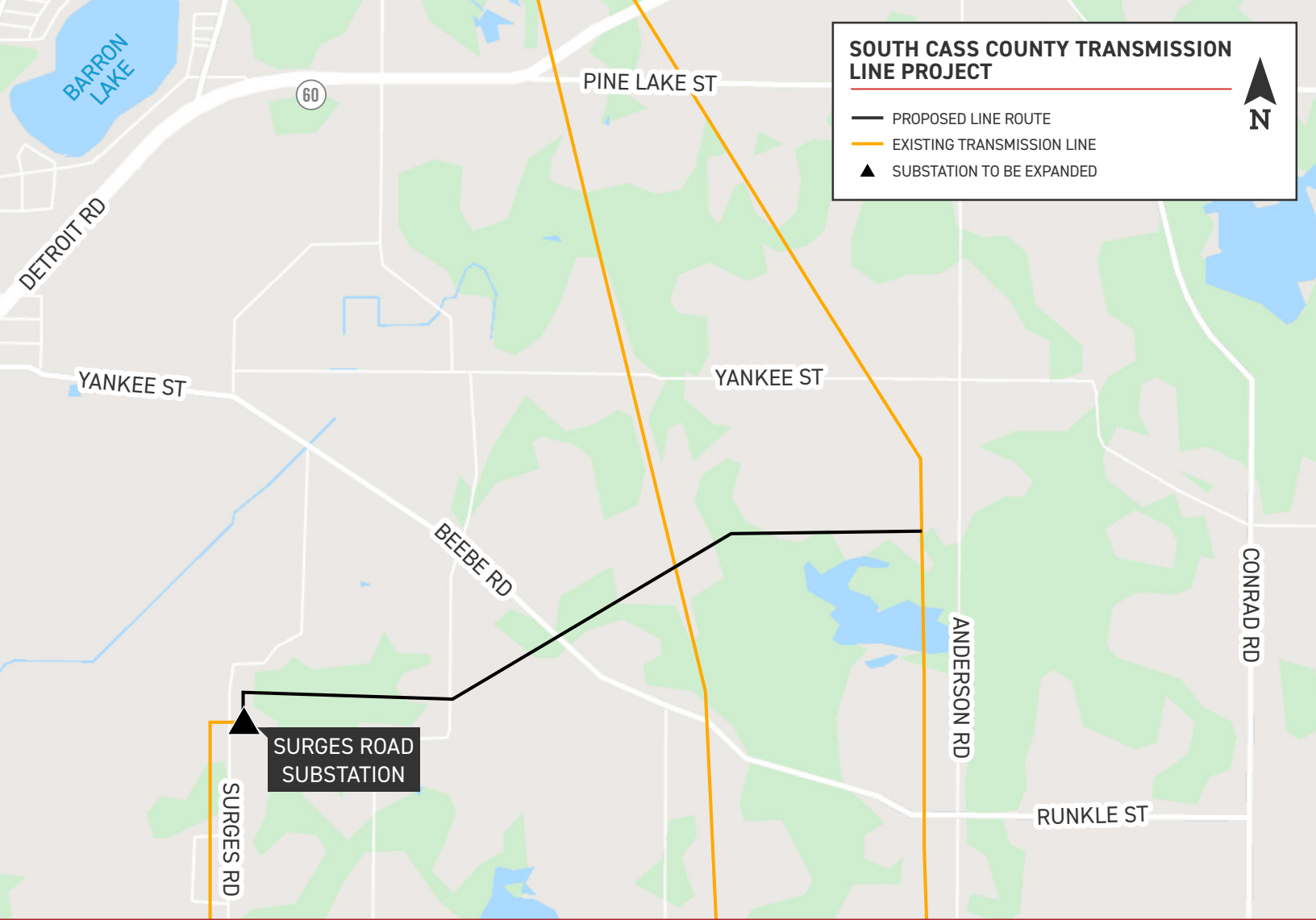
WHY

The project strengthens the electric transmission system by providing an additional power source to the area and supports the growing demand for electricity.

WHERE

The project area includes Howard and Milton townships in Cass County, Michigan.



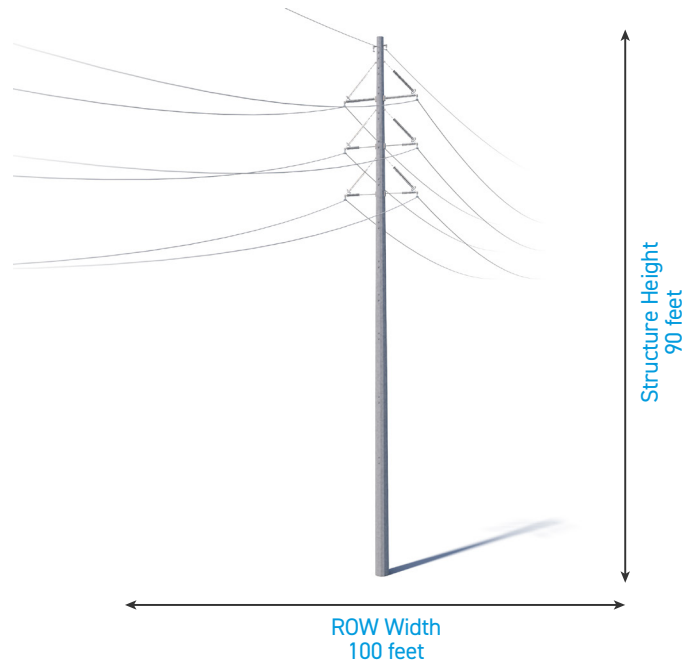


TYPICAL STRUCTURES

The project involves installing steel poles.

Typical Pole Height: [Approximately 90 feet*](#)

Typical Right-of-Way Width: [Approximately 100 feet*](#)



Exact structure, height, and right-of-way requirements may vary.

WE VALUE YOUR INPUT. PLEASE SEND COMMENTS AND QUESTIONS TO:

KIA CLAY · PROJECT OUTREACH SPECIALIST

KCLAY1@AEP.COM · 614-933-2367

INDIANAMICHIGANPOWER.COM/SOUTHCASSCOUNTY

