

WIREMILL

SUBSTATION AND EXTENSION PROJECT



Indiana Michigan Power representatives plan power grid upgrades to improve electric reliability for customers in Marion. The Wiremill Substation and Extension Project involves building a substation, building .25 miles of electric transmission line and retiring a substation.



WHAT

The project involves:

- Building Wiremill Substation located near the intersection of East 5th Street and South Shunk Street
- Building .25 miles of 69-kilovolt transmission line connecting Wiremill Substation to an existing transmission line near the intersection of East 4th Street and South Shunk Street
- Retiring Anaconda Substation near the intersection of East 8th Street and South Shunk Street

WHY

The existing substation was originally built in the 1950s with wood support structures that are deteriorating. It has also experienced frequent outages in recent years. Building the new substation improves electric service reliability for customers, reduces frequent equipment maintenance and the number of temporary power outages.

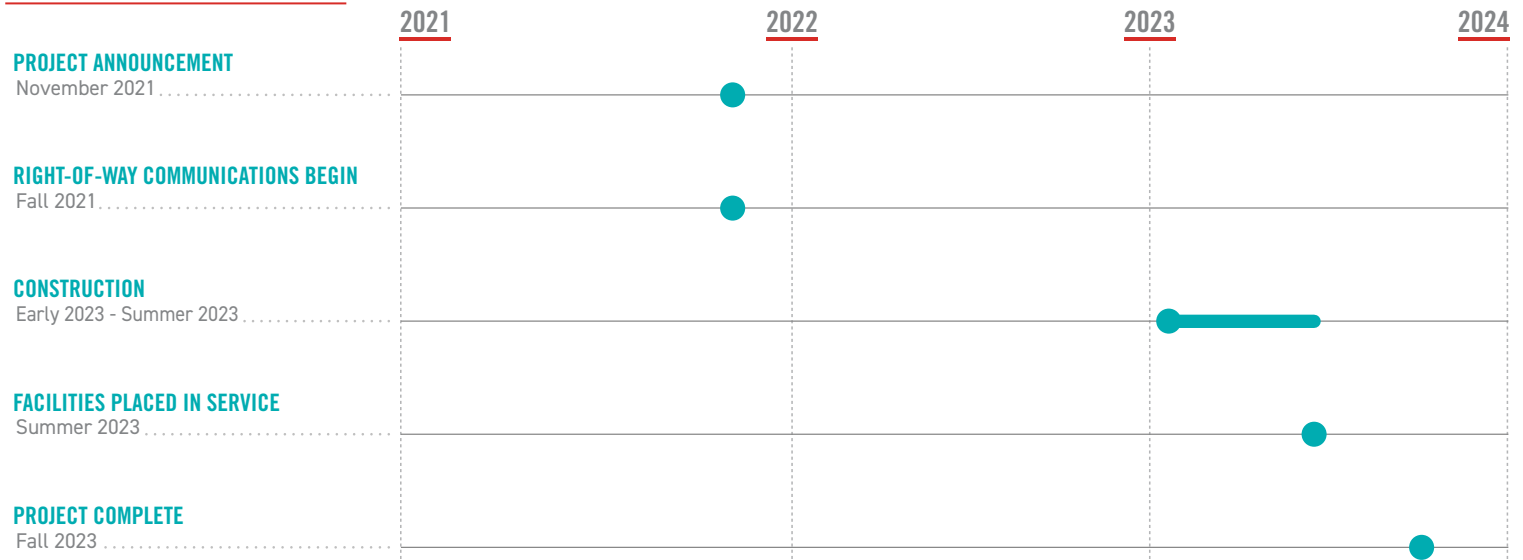
WHERE

The project area includes:

- The city of Marion
- Grant County
- Center Township



PROJECT SCHEDULE

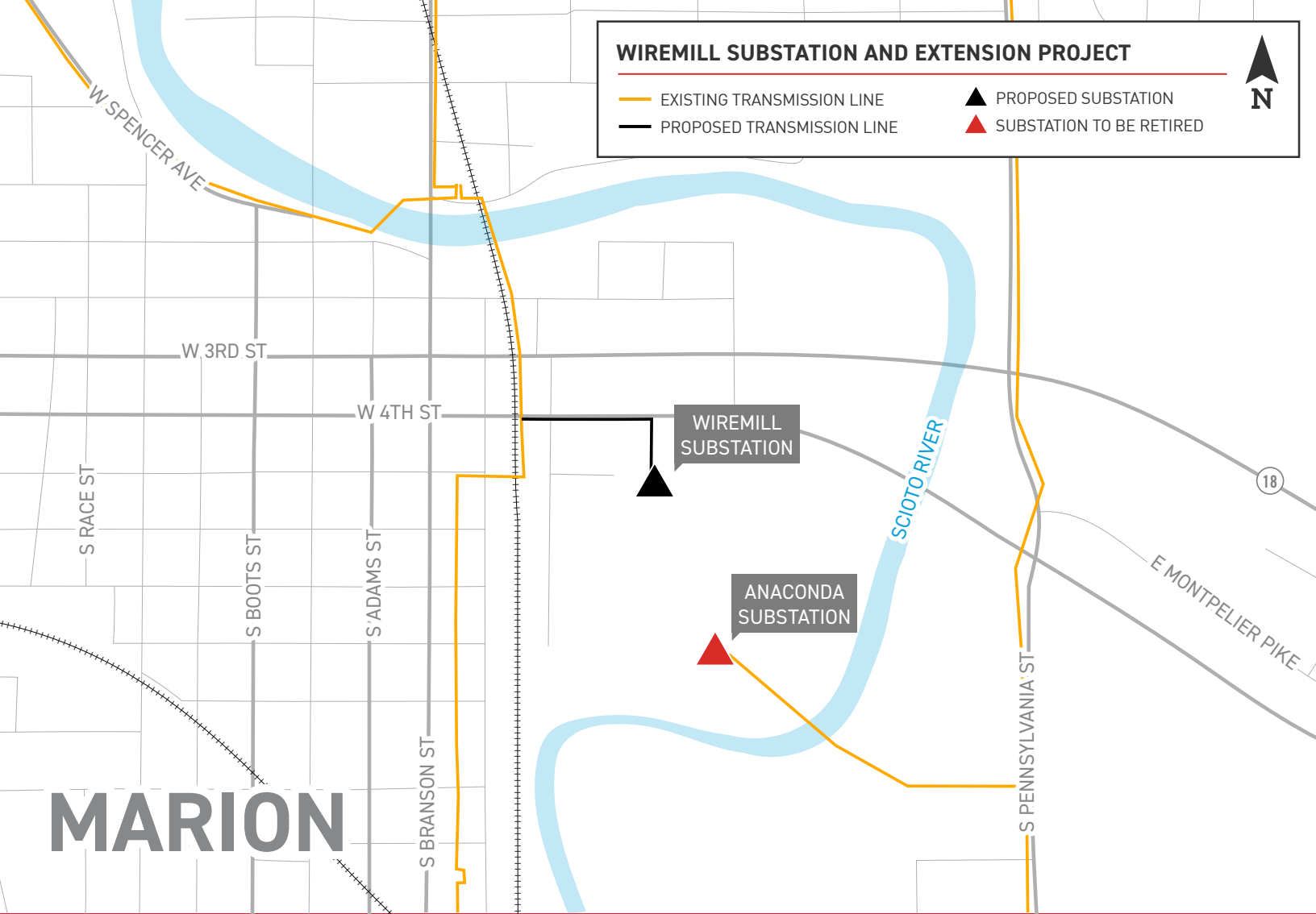


*Timeline subject to change.

WIREMILL SUBSTATION AND EXTENSION PROJECT

— EXISTING TRANSMISSION LINE
— PROPOSED TRANSMISSION LINE

▲ PROPOSED SUBSTATION
▲ SUBSTATION TO BE RETIRED



MARION

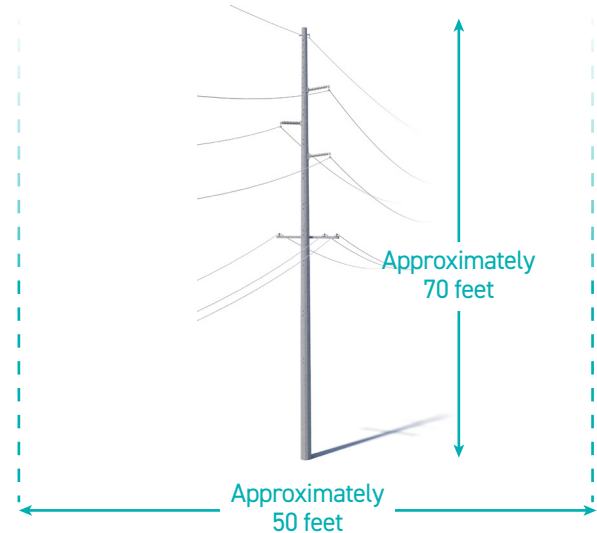
TYPICAL STRUCTURES

The project involves installing steel poles.

Typical Pole Height: **Approximately 70 feet***

Typical Right-of-Way Width: **Approximately 50 feet***

*Exact structure, height and right-of-way requirements may vary



I&M VALUES YOUR INPUT ABOUT THIS PROJECT. PLEASE SEND COMMENTS AND QUESTIONS TO:

✉ Indiana Michigan Power
c/o Brian Recker
P.O. Box 60
Fort Wayne, IN 46801

✉ brecker@aep.com
☎ (380) 205-5381
➡ [IndianaMichiganPower.com/Wiremill](https://www.IndianaMichiganPower.com/Wiremill)

**INDIANA
MICHIGAN
POWER**

An AEP Company

BOUNDLESS ENERGY™