

WALLEN ROAD TRANSMISSION LINE REBUILD PROJECT

Indiana Michigan Power representatives plan to upgrade the electric transmission grid in northern Fort Wayne. The Wallen Road Transmission Line Rebuild Project involves replacing lattice structures along the north side of Wallen Road.

WHAT

The project involves replacing several lattice towers along a 3-mile section of transmission line on Wallen Road, between Wallen Substation off Lima Road and Interstate 69.

Recently replaced poles will remain.

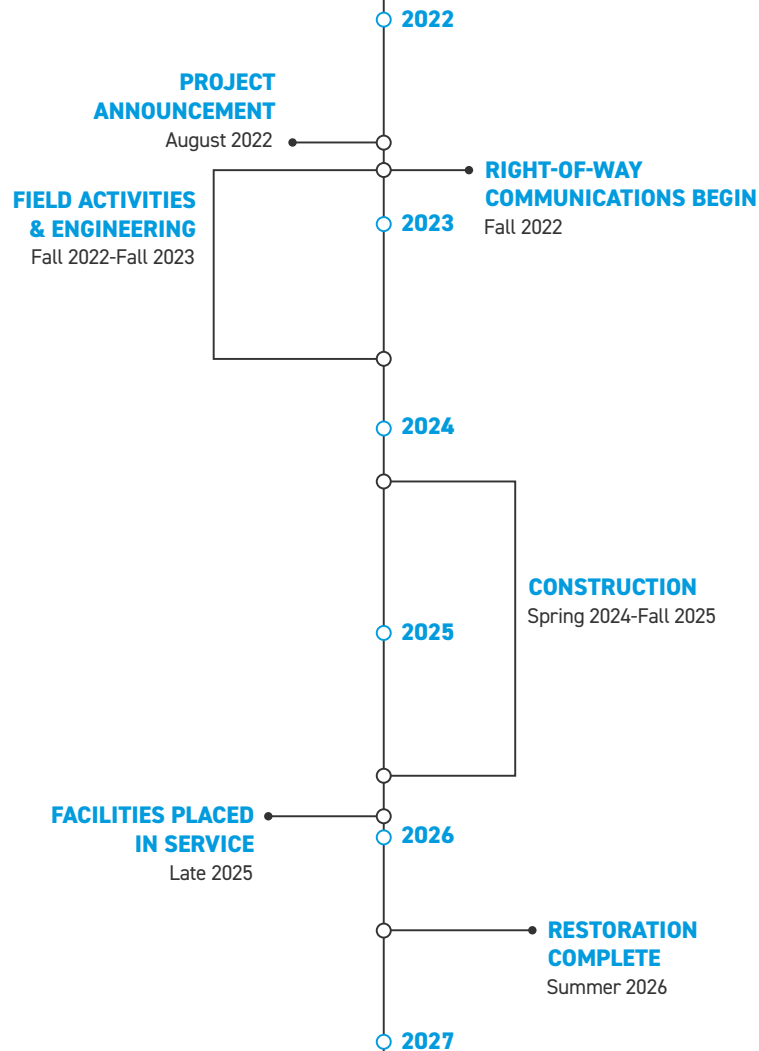
WHY

The project strengthens the local electric transmission system by replacing deteriorating towers and wires that date back to the 1930s with modern equipment. The power line has experienced several transmission service outages since 2015. These upgrades improve the line's operational performance, reduce the need for frequent maintenance and enhance local electric reliability.

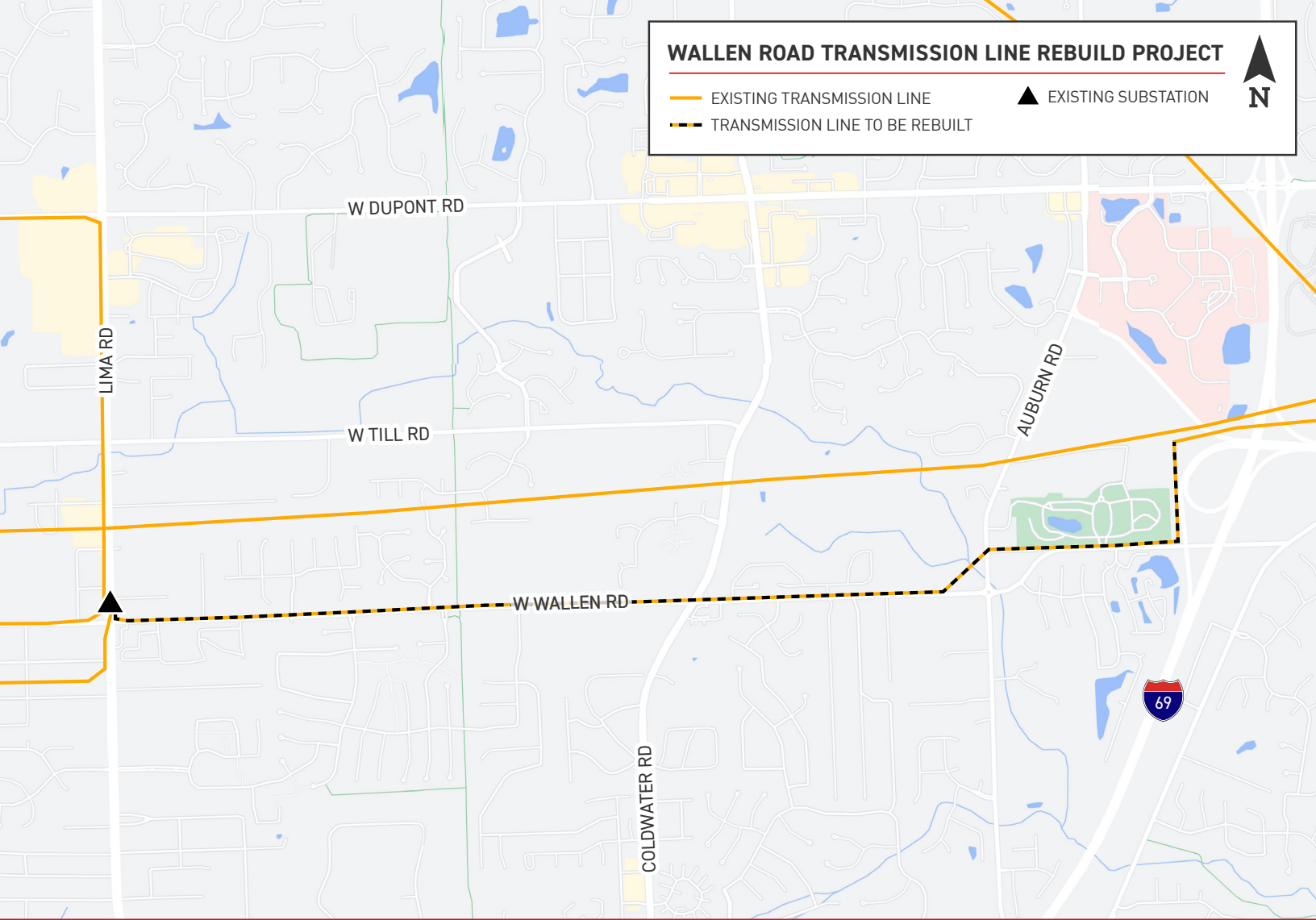
WHERE

The project area includes:

- Fort Wayne
- St. Joseph and Washington townships in Allen County



Timeline subject to change.



WALLEN ROAD TRANSMISSION LINE REBUILD PROJECT

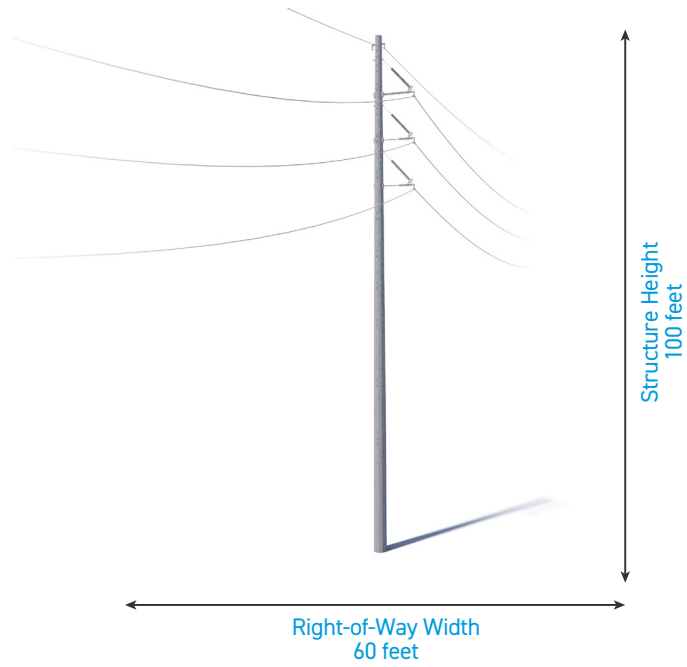
- EXISTING TRANSMISSION LINE
- TRANSMISSION LINE TO BE REBUILT
- EXISTING SUBSTATION

TYPICAL STRUCTURES

The project involves installing steel poles.

Typical Pole Height: **Approximately 100 feet***

Typical Right-of-Way Width: **Approximately 60 feet***



*Exact structure, height, and right-of-way requirements may vary.

WE VALUE YOUR INPUT. PLEASE SEND COMMENTS AND QUESTIONS TO:
 ERIC GIFFEY · PROJECT OUTREACH SPECIALIST
 EAGIFFEY@AEP.COM · 380-205-5044
 INDIANAMICHIGANPOWER.COM/WALLENROAD

