

SOUTH BEND-NILES TRANSMISSION LINE PROJECT

Indiana Michigan Power (I&M) representatives plan power grid upgrades to improve electric reliability for customers in southwestern Michigan and northern Indiana. The South Bend-Niles Transmission Line Project involves updating a substation and about 12 miles of electric transmission line from Niles, Michigan to South Bend, Indiana.

WHAT

The project involves:

- Rebuilding about 4 miles of power line from FourFlag Substation, off South 3rd Street in Niles to the Indiana State Line, off Stateline Road.
- Rebuilding about 8 miles of power line from Stateline Road, to South Bend Substation off Edison Road.
- Upgrading University Park Substation, off Indiana State Road 23.

WHY

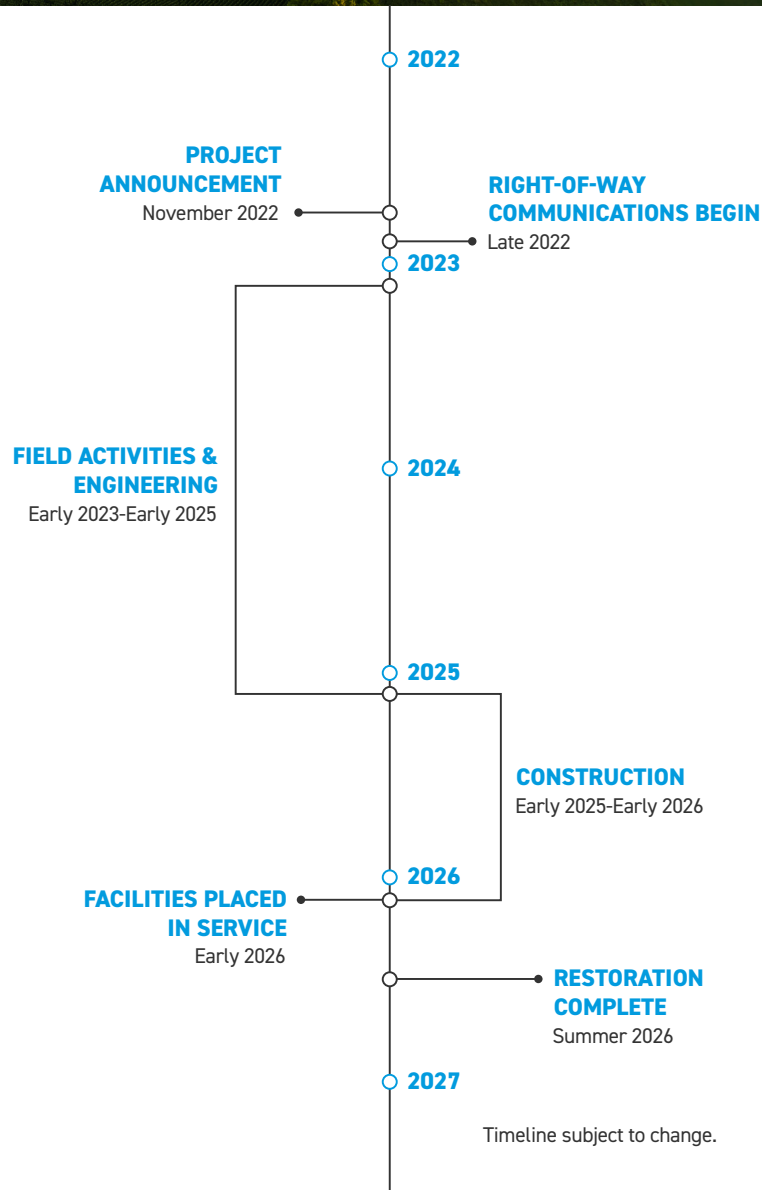
The project:

- Strengthens the local electric transmission system by replacing aging poles and wires from the 1960s with modern equipment.
- Increases substation capacity to address growing demand for electricity in the community.
- Improves operational performance, reducing the likelihood of extended power outages.
- Enhances electric reliability for area customers.

WHERE

The project area includes:

- South Bend, IN
- Clay and Harris townships in St. Joseph County
- Niles, MI
- Niles and Milton townships in Berrien County

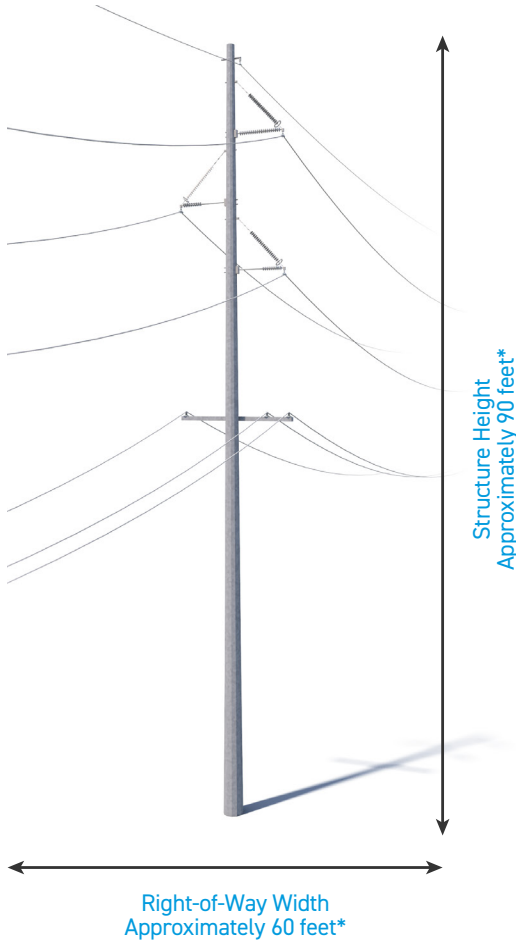


TYPICAL STRUCTURES

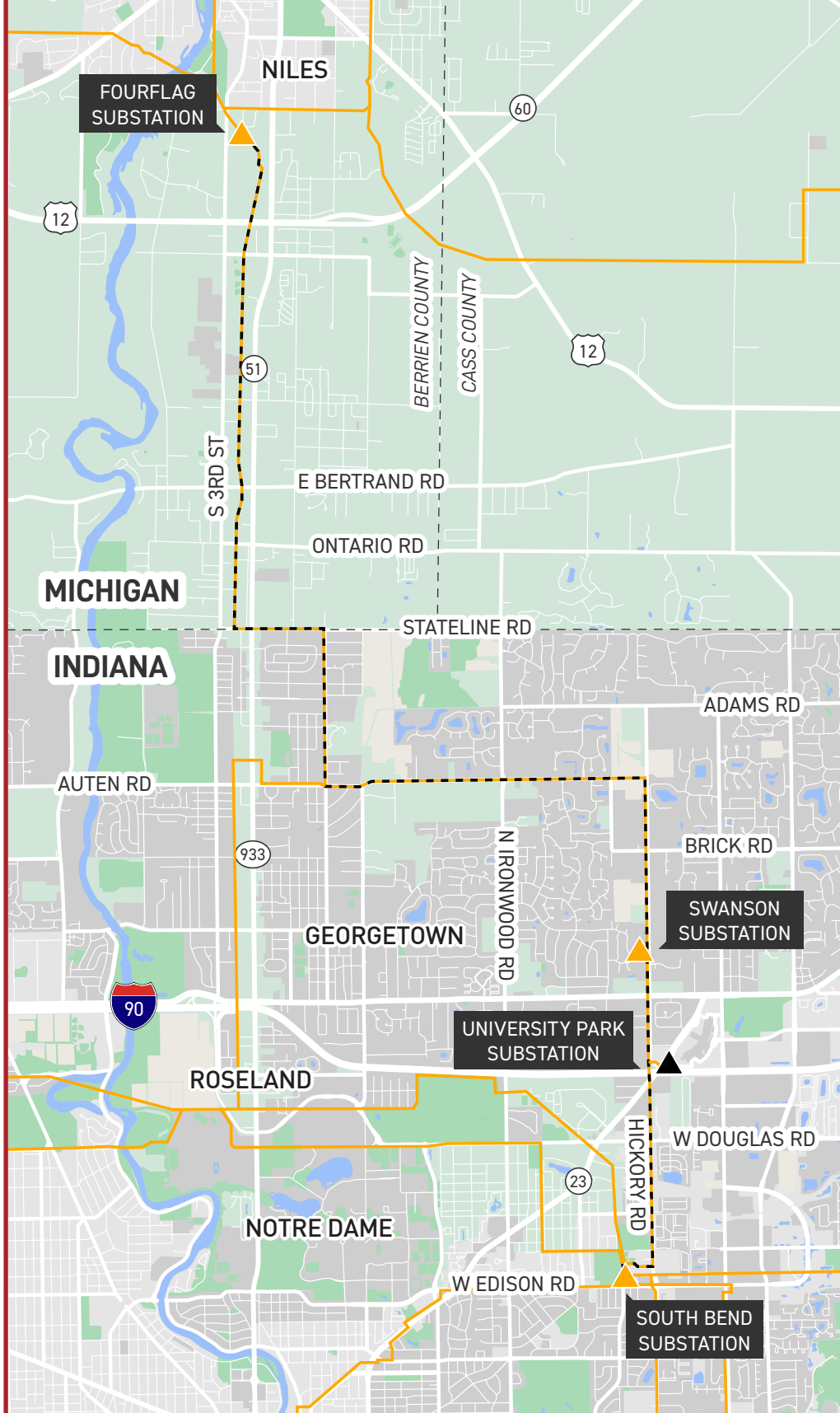
The project involves installing steel poles.

Typical Pole Height: **Approximately 90 feet***

Typical Right-of-Way Width: **Approximately 60 feet***



*Exact structure, height, and right-of-way requirements may vary.



SOUTH BEND-NILES TRANSMISSION LINE PROJECT

- EXISTING TRANSMISSION LINE
- - - TRANSMISSION LINE TO BE REBUILT
- ▲ EXISTING SUBSTATION
- ▲ SUBSTATION TO BE UPGRADED



WE VALUE YOUR INPUT. PLEASE SEND COMMENTS AND QUESTIONS TO:

ERIC GIFFEY • PROJECT OUTREACH SPECIALIST

EAGIFFEY@AEP.COM • 380-205-5044

INDIANAMICHIGANPOWER.COM/SOUTHBEND-NILES

