

# KENMORE SUBSTATION

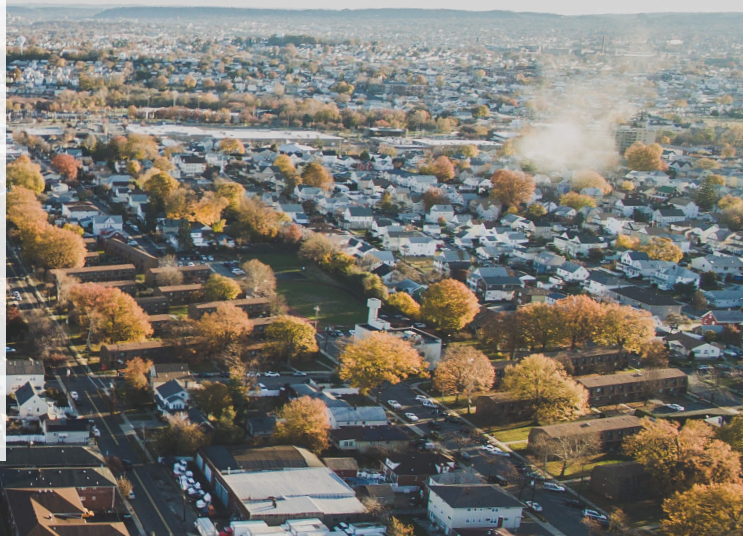
## UNDERGROUND CONNECTION PROJECT



An AEP Company

BOUNDLESS ENERGY™

Indiana Michigan Power (I&M) plans to strengthen the electric transmission system in east-central Indiana. The proposed improvements in Delaware County involve building about 0.5 miles of underground 69-kilovolt (kV) transmission line to connect the Kenmore Substation to existing transmission lines in the area. The new transmission line travels beneath local streets and will not be visible once completed. These improvements increase reliability, reduce power outages and speed recovery when outages occur.



### WHAT

The Kenmore Substation Underground Connection Project includes:

- About 0.5 miles of new underground 69-kV transmission line
- The new line travels beneath existing streets in the area
- Upon completion, the transmission line will be underground and streets will be repaired to reduce impact on surrounding neighborhoods

### WHY

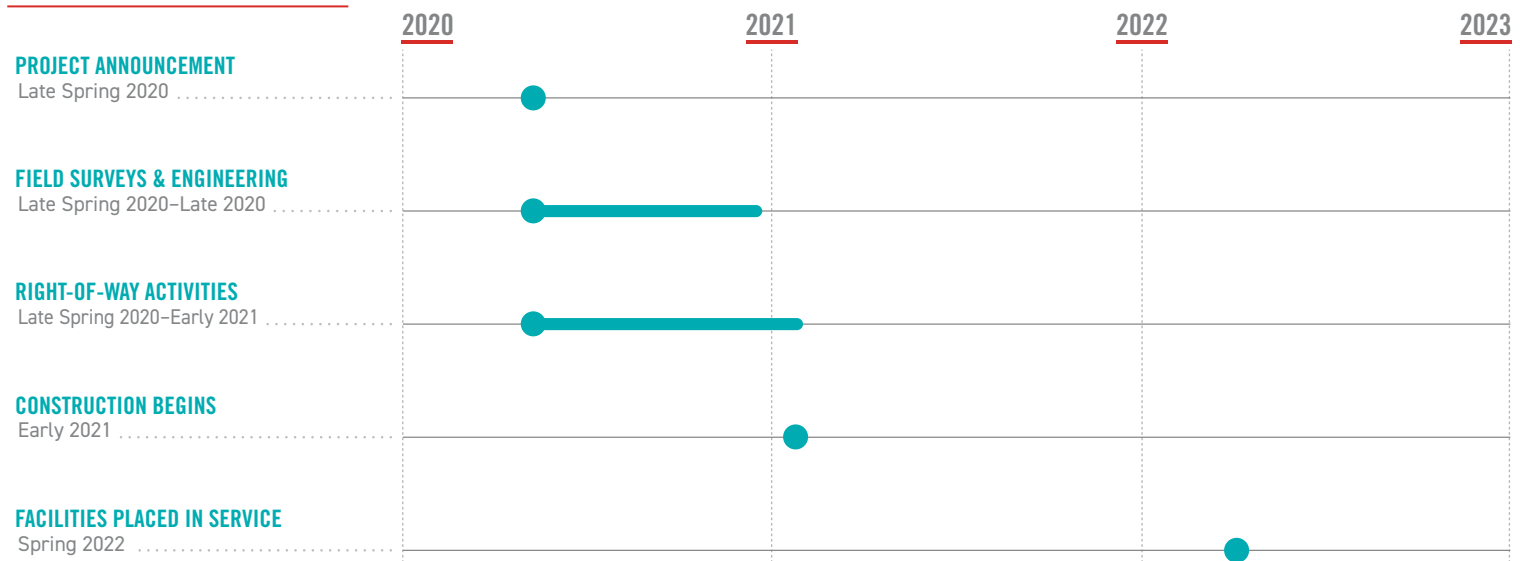
- Strengthens the local electric transmission system
- Reduces the likelihood of power outages
- Speeds recovery of service when outages occur
- Prepares the electric system to support economic development.
- Lessens visual impact on surrounding neighborhoods

### WHERE

These upgrades take place in Center Township in Delaware County.



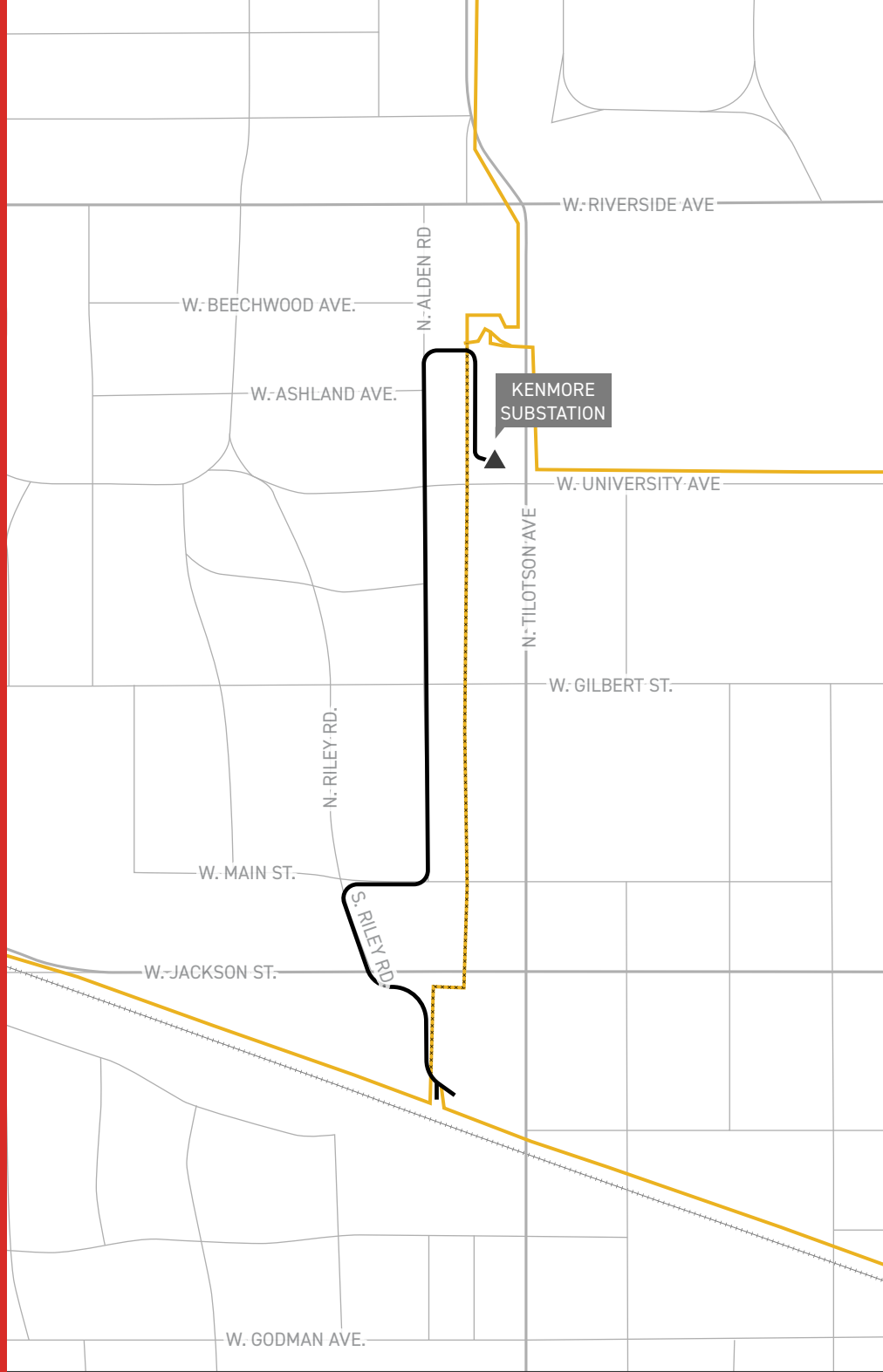
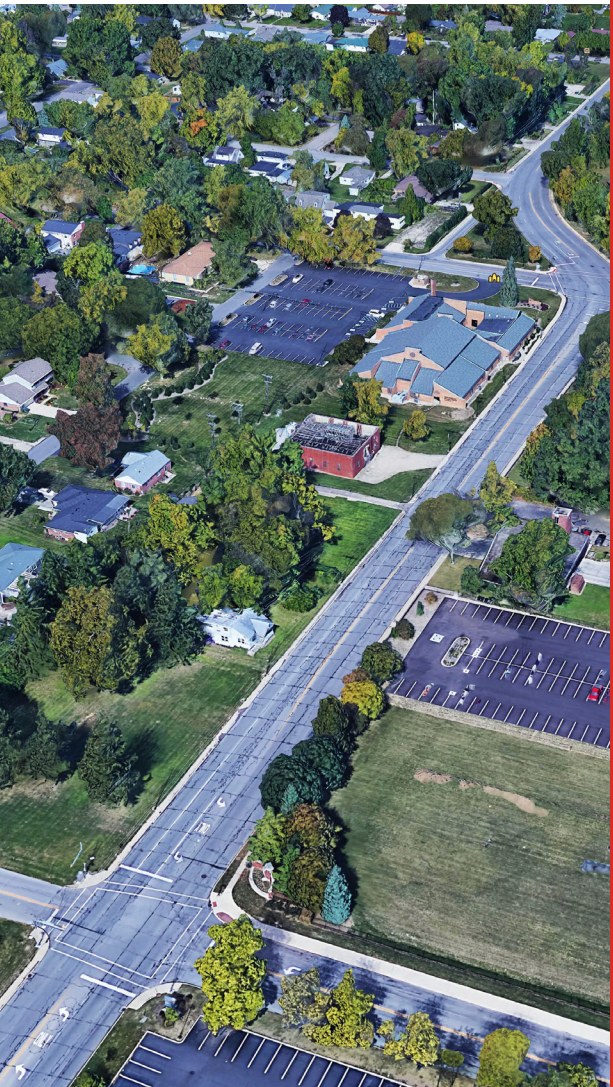
### PROJECT SCHEDULE



\*Timeline subject to change.

## TYPICAL STRUCTURES

A benefit of underground transmission lines, the line travels through underground conduit that is not visible once construction is completed. The only structures visible, are riser poles that elevate the line to connect with local infrastructure. These risers are located at the entry/exit of underground routes.






### KENMORE SUBSTATION UNDERGROUND CONNECTION PROJECT

- EXISTING TRANSMISSION LINES
- UNDERGROUND ROUTE
- TRANSMISSION LINE TO BE REMOVED
- ▲ SUBSTATION



I&M VALUES YOUR INPUT ABOUT THIS PROJECT. PLEASE SEND COMMENTS AND QUESTIONS TO:

 Indiana Michigan Power  
I&M Outreach Team  
P.O. Box 60  
Fort Wayne, IN 46801

 [IM\\_Outreach@aep.com](mailto:IM_Outreach@aep.com)  
 833-441-2260  
 [IndianaMichiganPower.com/KenmoreUnderground](https://www.IndianaMichiganPower.com/KenmoreUnderground)

