

# MOUNT HERON -COAL CREEK

## TRANSMISSION LINE REBUILD PROJECT



Appalachian Power representatives plan upgrades to the transmission system in Buchanan and Tazewell counties to improve the area's electric reliability. Construction begins in early 2025 and concludes fall 2026.

### WHAT

The project involves:

- Building about 2 miles of 69-kilovolt (kV) transmission line
- Building about 2 miles of 138-kV transmission line
- Rebuilding about 11 miles of transmission line in or near the existing right-of-way
- Retiring the Skeggs Branch and Knox Creek Coal substations
- Building the proposed 69/138-kV Mount Heron Substation

### WHY

The upgrades:

- Allow crews to retire about 5 miles of transmission line in the area and replace aging equipment originally installed in 1935
- Bring a new power source to the area via the proposed 69/138-kV Mount Heron Substation in Oakwood to provide continued electric reliability and strengthen the area transmission system

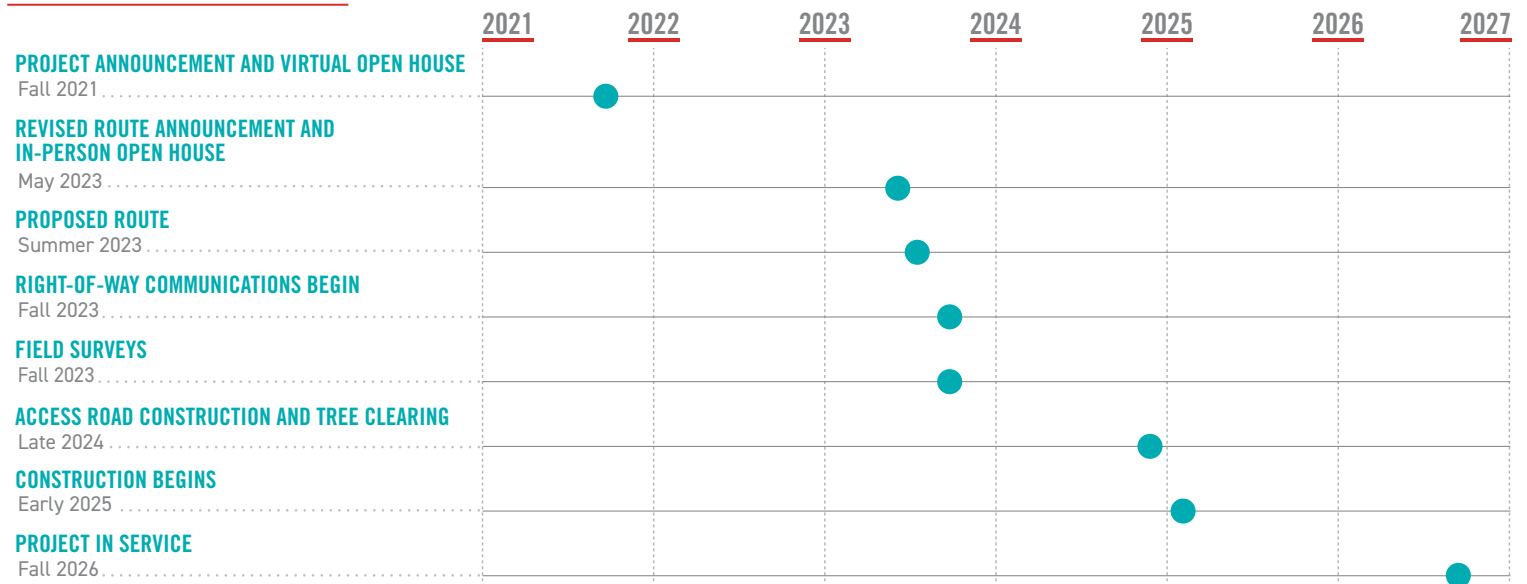
### WHERE

The project area includes:

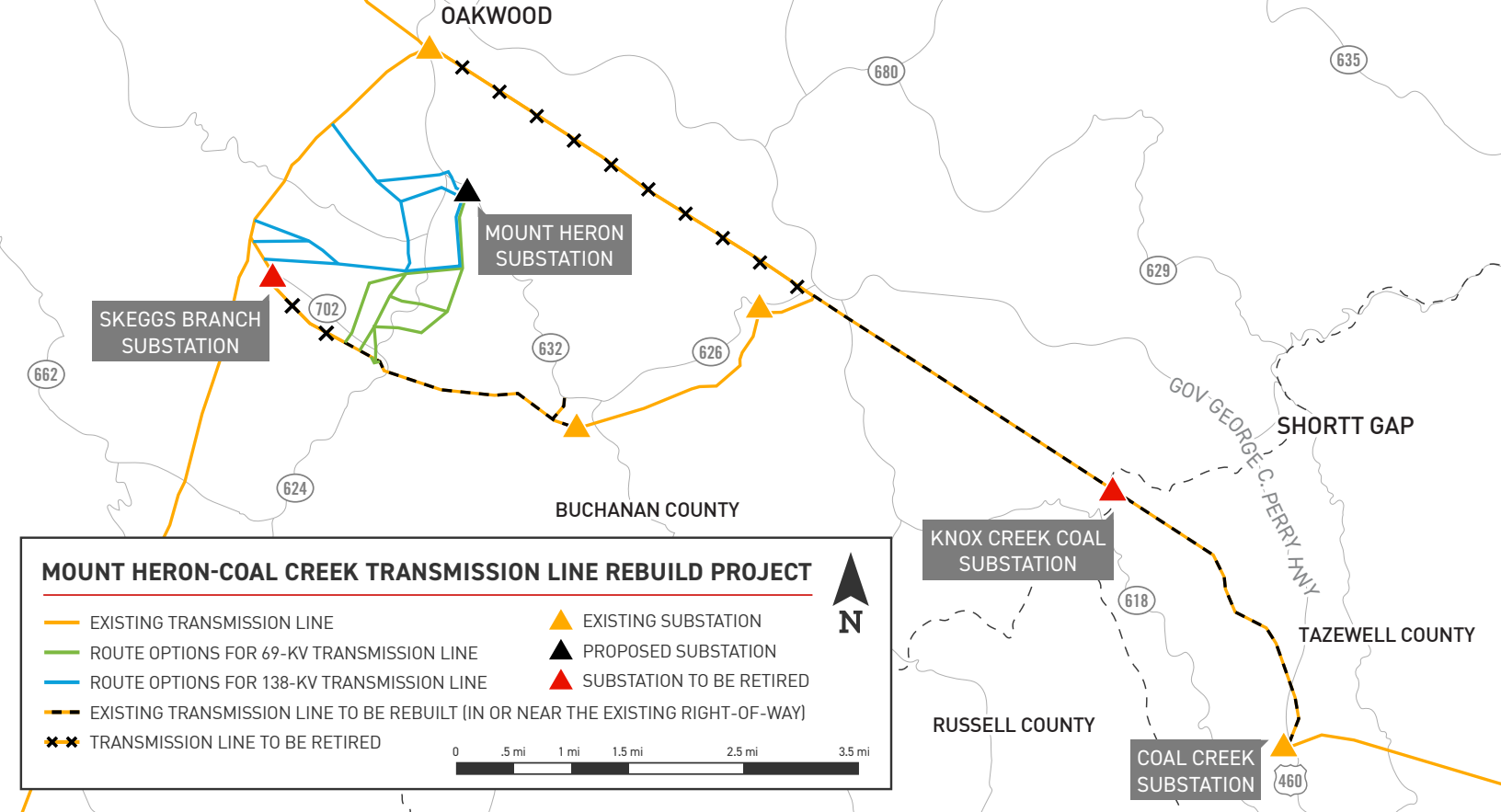
- Buchanan County
- Tazewell County
- The Garden Creek, Mavisdale and Oakwood communities

The proposed Mount Heron Substation will be located at the intersection of Garden Creek Road and Page Drive (Route 632) about 2 miles south of Oakwood.

### PROJECT SCHEDULE



\*Timeline subject to change.



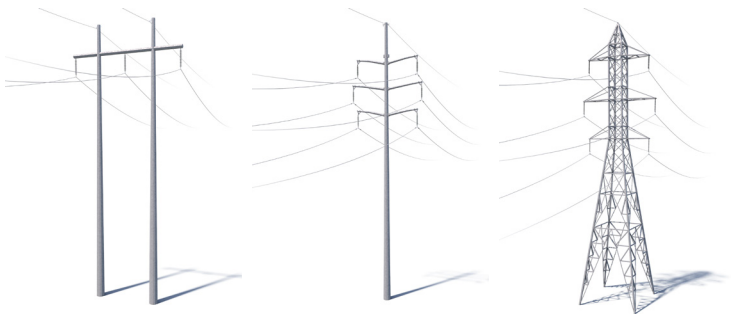
## TYPICAL STRUCTURES

Crews plan to rebuild the line using steel H-frame structures and build the new line using steel single poles and lattice towers.

At Appalachian Power, we are committed to meeting the energy needs of customers while protecting the environment.

Typical structure height: **75-85 feet\***

Typical right-of-way width: **100 feet\***



H-Frame for Transmission Line to be Rebuilt

Single Pole for New Transmission Line

Lattice Tower for New Transmission Line

\*Exact structure, height and right-of-way requirements may vary

## TYPICAL SUBSTATION

Substations serve as electrical intersections converting the power to voltage levels for use in homes, businesses and industrial facilities.

\*Image does not depict final substation design. Final engineering and construction details are not complete.



APPALACHIAN POWER VALUES YOUR INPUT ABOUT THIS PROJECT. PLEASE SEND COMMENTS AND QUESTIONS TO:

### NICOLE HODGES

Project Outreach Specialist

833-313-3743 • APCO\_Outreach@aep.com

[AppalachianPower.com/MountHeron](http://AppalachianPower.com/MountHeron)



An AEP Company

BOUNDLESS ENERGY™