

# WEST TEXARKANA TRANSMISSION IMPROVEMENTS PROJECT

Southwestern Electric Power Company (SWEPCO) officials plan to strengthen the electric grid in the Texarkana region by rebuilding about 7 miles of 69-kilovolt (kV) transmission line.

## WHAT

The project involves:

- Rebuilding approximately 7 miles of 69-kV transmission line
- Upgrading to substation equipment

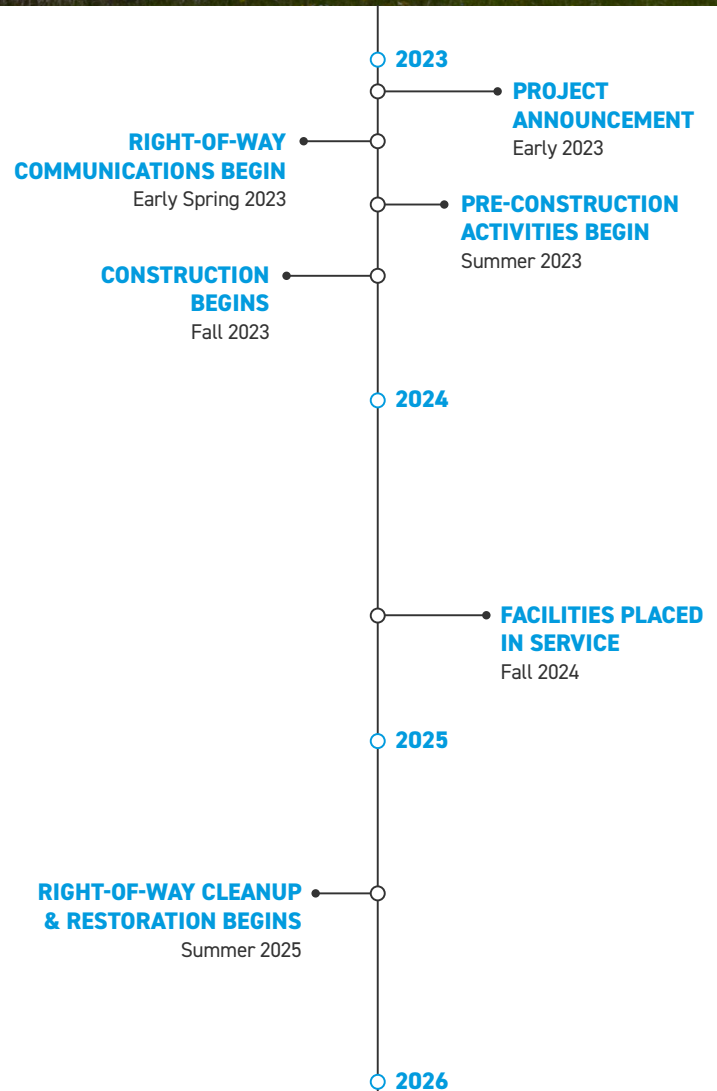
## WHY

The transmission line was constructed in 1961 and is past its planned service life. The project:

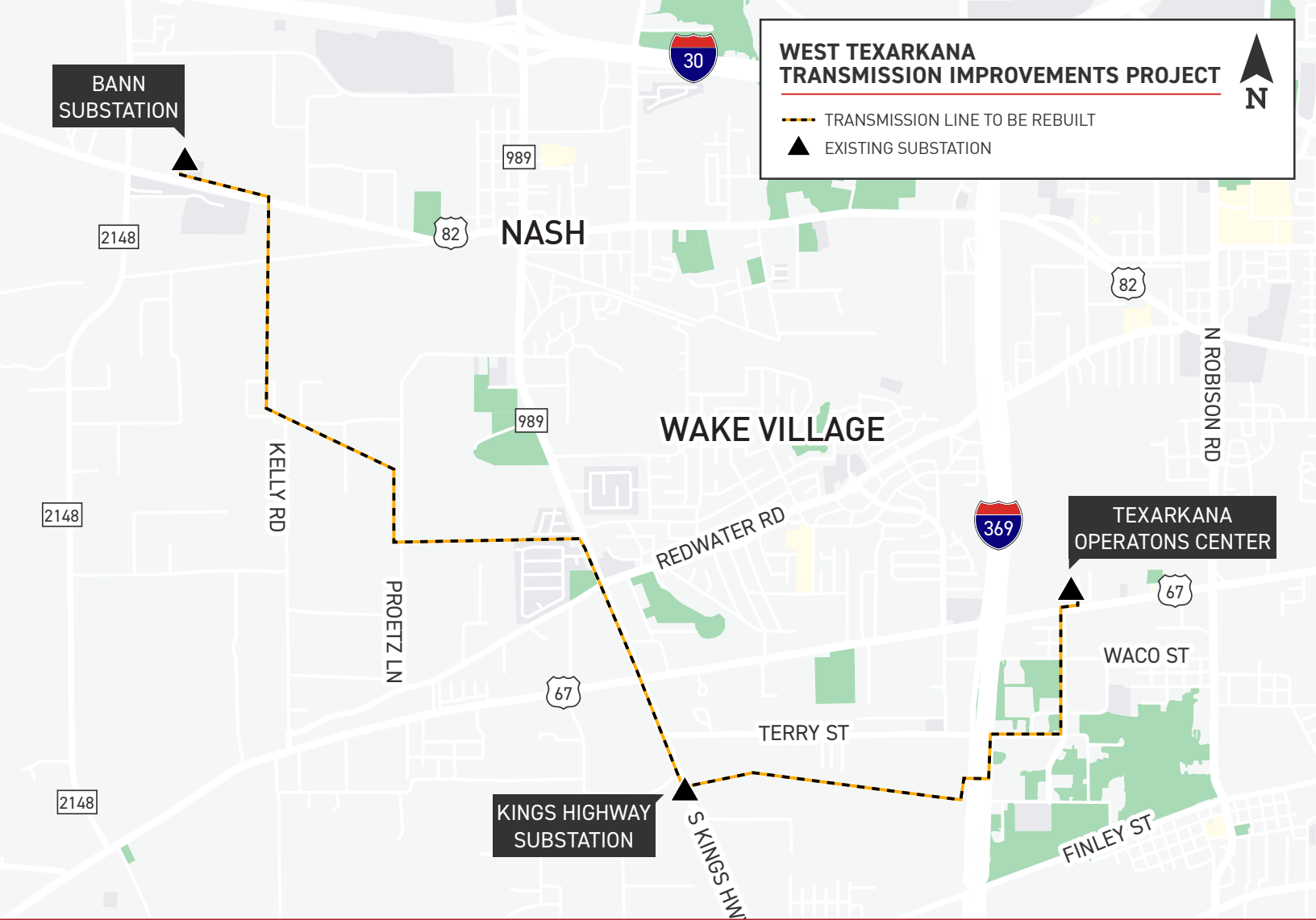
- Replaces deteriorating wooden poles with modern steel poles
- Strengthens the system against severe weather impacts
- Decreases the likelihood and duration of wide, community-sustained outages

## WHERE

The transmission line rebuild begins at SWEPCO's Bann Substation and extends southeast about 7 miles to where it ends at a SWEPCO substation in southwest Texarkana.



Timeline subject to change.



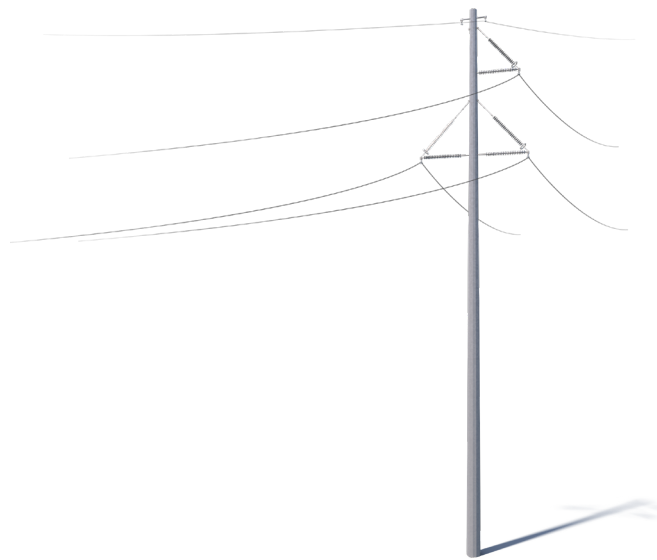
## TYPICAL STRUCTURES

SWEPCO crews plan to install single-pole steel structures.

Typical Height: 85 feet

Typical Distance Between Structures: 320 feet

Typical Right-of-Way Width: 60 - 100 feet



\*Exact structure, height, and right-of-way requirements may vary.

**WE VALUE YOUR INPUT. PLEASE SEND COMMENTS AND QUESTIONS TO:**

MICHAEL HARRIS · PROJECT OUTREACH SPECIALIST

MHHARRIS@AEP.COM · 918-231-8047

SWEPCO.COM/WESTTEXARKANA

