

# MINEOLA-NORTH MINEOLA TRANSMISSION IMPROVEMENTS PROJECT

SWEPCO representatives plan to strengthen the electric system in the Mineola area by rebuilding an aging transmission line and replacing existing wires.

## WHAT

The Mineola - North Mineola Transmission Improvements Project involves rebuilding approximately 2 miles of 69-kilovolt (kV) transmission line.

The project also involves replacing about a mile of power lines.

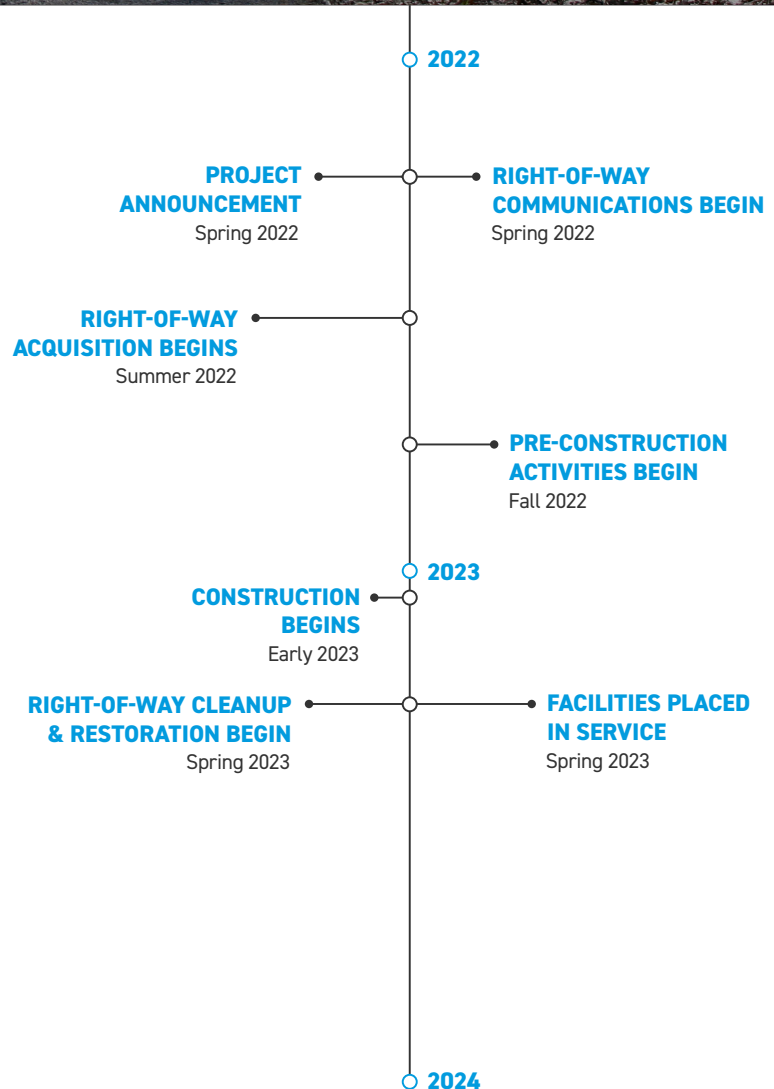
## WHY

The Mineola - North Mineola transmission line is nearly 75 years old and is past its planned service life. The project:

- Replaces deteriorating wooden poles with modern steel poles
- Replaces aging wires on a section that was previously rebuilt using concrete poles
- Strengthens the system against severe weather, and decreases the likelihood and duration of wide, community-sustained outages

## WHERE

The line stretches between the Mineola Substation, located at West Front Street and South Street, and North Mineola Substation, located near the intersection of Northeast Loop 564 and FM 1254.



Timeline subject to change.



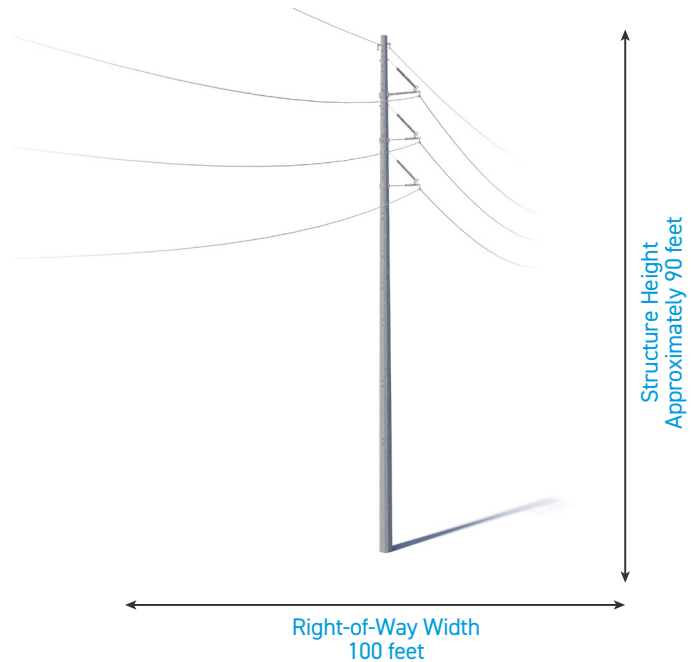
## TYPICAL STRUCTURES

Crews plan to install single-pole steel structures.

Typical Structure Height: [Approximately 90 feet](#)

Typical Distance Between Structures: [Approximately 300 feet](#)

Typical Right-of-Way Width: [100 feet](#)



\*Exact structure, height, and right-of-way requirements may vary.

**WE VALUE YOUR INPUT. PLEASE SEND COMMENTS AND QUESTIONS TO:**

MICHAEL HARRIS · PROJECT OUTREACH SPECIALIST

MHHARRIS@AEP.COM · 918-599-2553

[SWEPCO.COM/MINEOLA-NORTHMINEOLA](http://SWEPCO.COM/MINEOLA-NORTHMINEOLA)

