

GOODLETT

TRANSMISSION LINE IMPROVEMENTS PROJECT



An AEP Company

BOUNDLESS ENERGY™

AEP Texas representatives plan to build a 138-kilovolt (kV) transmission line in Hardeman County.

WHAT

The Goodlett Transmission Improvements Line Project involves constructing a 138-kV transmission line in the Hardeman County area.

AEP Texas officials filed a Certificate of Convenience and Necessity (CCN) with the Public Utility Commission of Texas (PUC), following a review of public input and additional route analysis, in January 2022. The PUC determined the final line route on Sept. 29, 2022.

WHY

Years of underground activity at an active gypsum mine and natural erosion have compromised portions of the existing Childress - Quanah transmission line and AEP Texas' Acme Bestwall Substation.

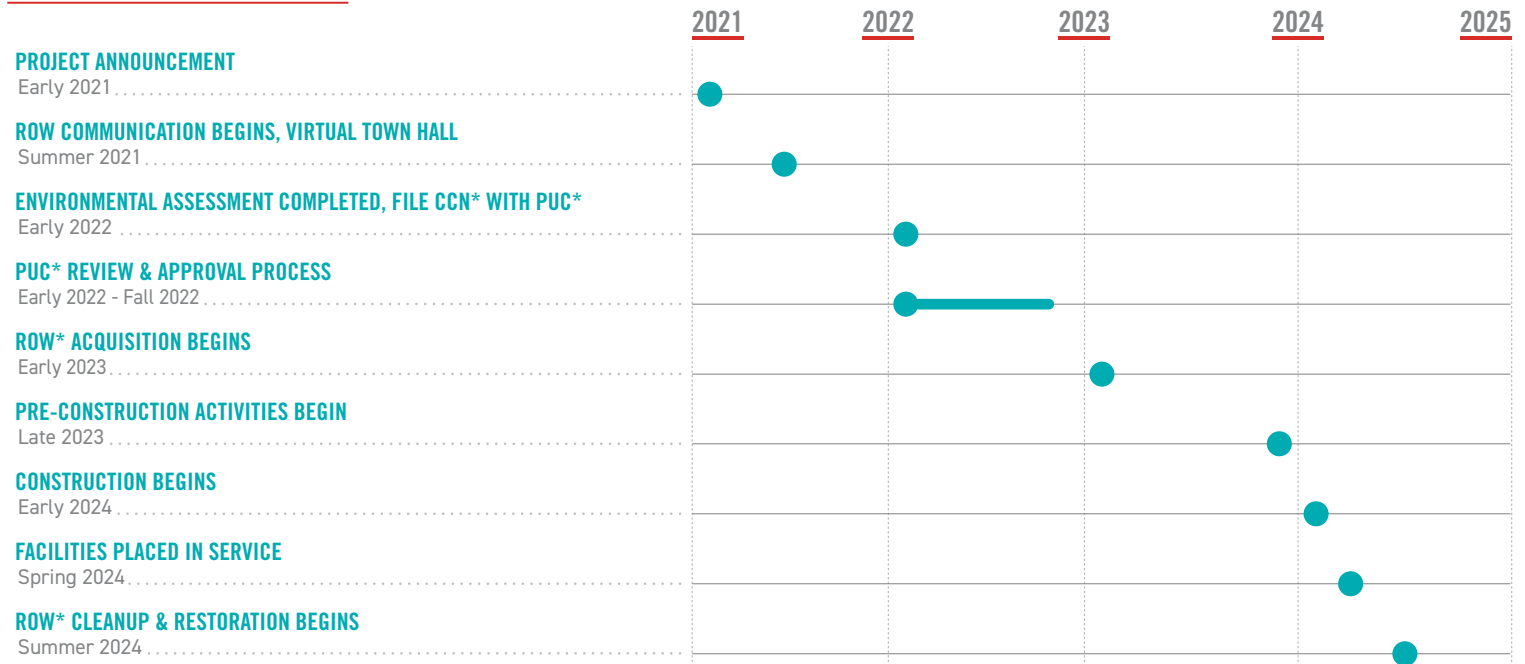
AEP Texas needs to relocate this line due to the considerable reliability and safety concerns these conditions have created.

WHERE

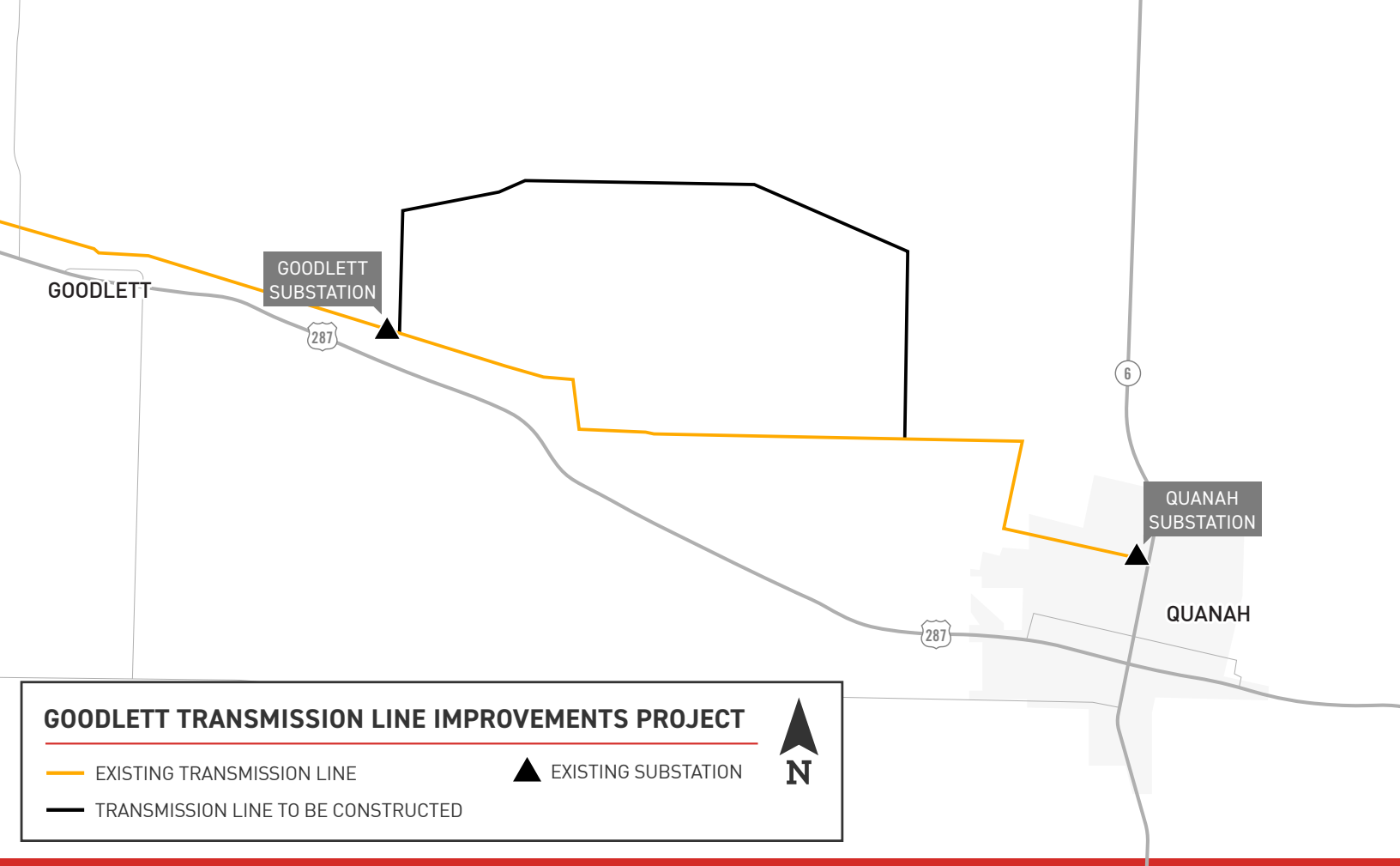
The transmission line begins at AEP Texas' new Goodlett Substation, located along FM 1166, and ties into an existing transmission line near the junction of Arkansas and Mayfield roads in Hardeman County.

The PUC determined the final line route based on information included in AEP Texas' CCN application and landowner input.

PROJECT SCHEDULE



*ROW: Right-of-Way; PUC: Public Utility Commission of Texas; CCN: Certificate of Convenience and Necessity
Note: Timeline subject to change.



TYPICAL STRUCTURES

AEP Texas plans to use single concrete poles for most of the proposed line, with single steel poles necessary at select locations.

Typical Structure Height: 70-110 feet

Typical Distance Between Structures: 500-800 feet

Typical Right-of-Way: 100 feet

*Exact structure types and heights may vary



AEP TEXAS VALUES YOUR INPUT ABOUT THIS PROJECT. PLEASE SEND COMMENTS AND QUESTIONS TO:

MICHAEL HARRIS

Project Outreach Specialist

(918) 231-8047 • mharris@aep.com

[AEPTexas.com/Goodlett](https://www.aeptexas.com/goodlett)



An AEP Company

BOUNDLESS ENERGY™