

ATLANTA AREA

TRANSMISSION IMPROVEMENTS PROJECT



Southwestern Electric Power Company (SWEPCO) representatives plan to upgrade the electric transmission system in Cass County. Crews plan to begin construction in fall 2022 and finish by the end of 2023.

WHAT

The project involves:

- Rebuilding about 19 miles of 138-kilovolt power line between the IPC Domino Substation, located in northeastern Cass County, and the West Atlanta Substation, located in central Cass County
- Upgrading area substation equipment

WHY

Project benefits:

- Replaces deteriorating wooden poles from the 1940s with modern steel poles to improve overall grid condition and reduce maintenance frequency
- Upgrades wires and substation equipment to decrease the likelihood of larger, community-sustained power outages
- Increases electric capacity to ensure continued electric reliability for customers

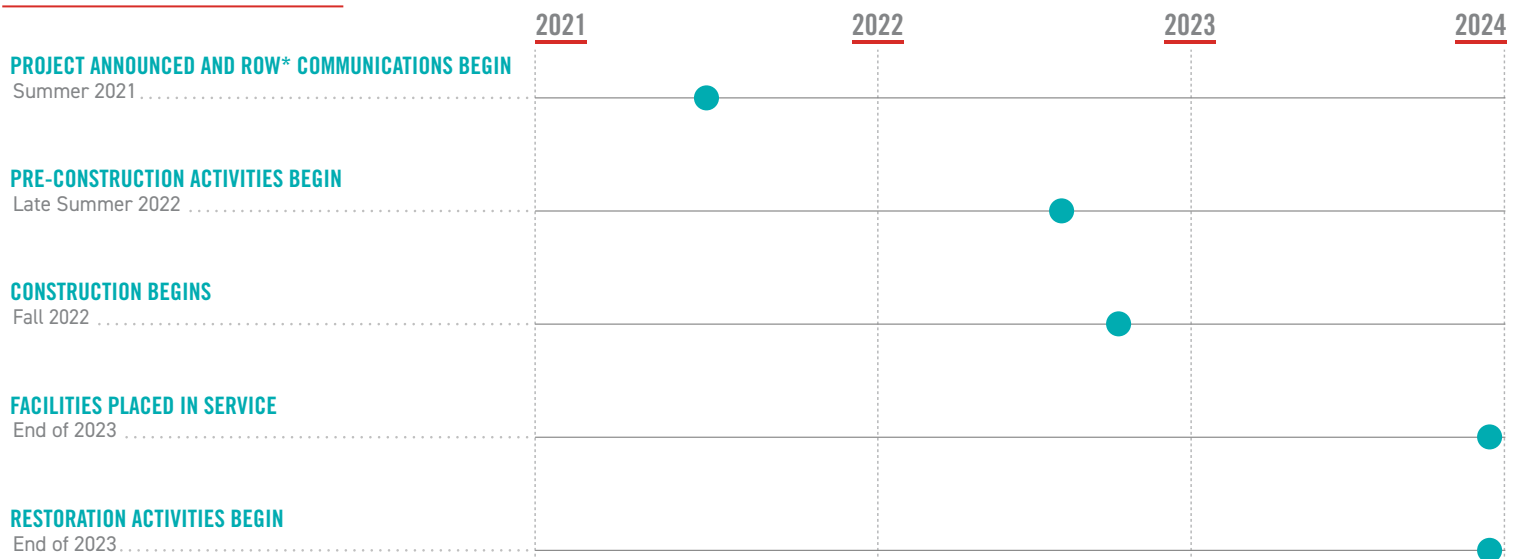
WHERE

- The IPC Domino Substation is located in northeastern Cass County between Rocky Point Park Road and U.S. Highway 59
- The West Atlanta Substation is located about 7 miles southwest of Atlanta off U.S. Highway 59

The project area includes:

- City of Domino
- City of Atlanta
- Cass County

PROJECT SCHEDULE



*ROW: Right-of-Way

**Timeline subject to change.

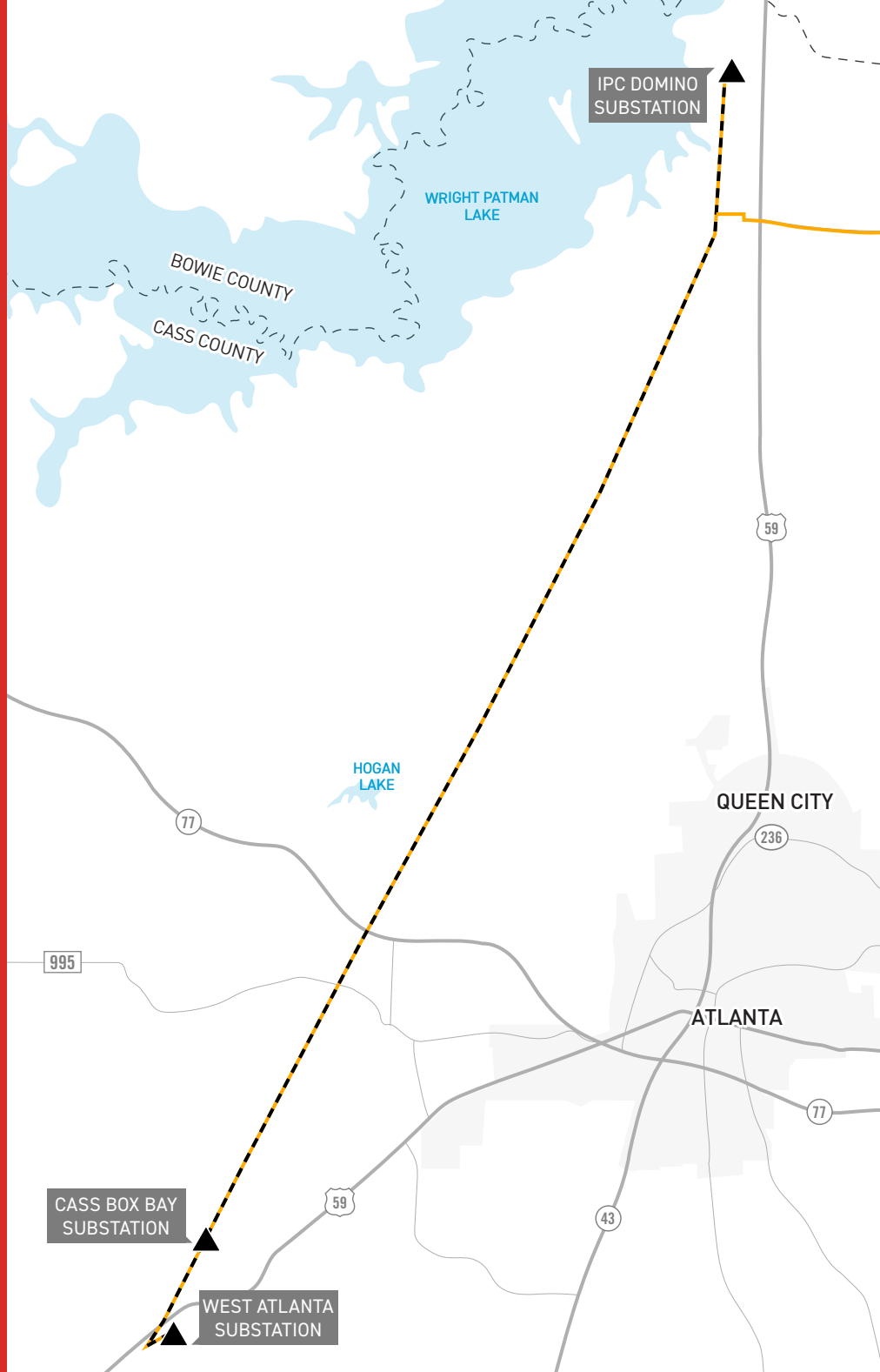
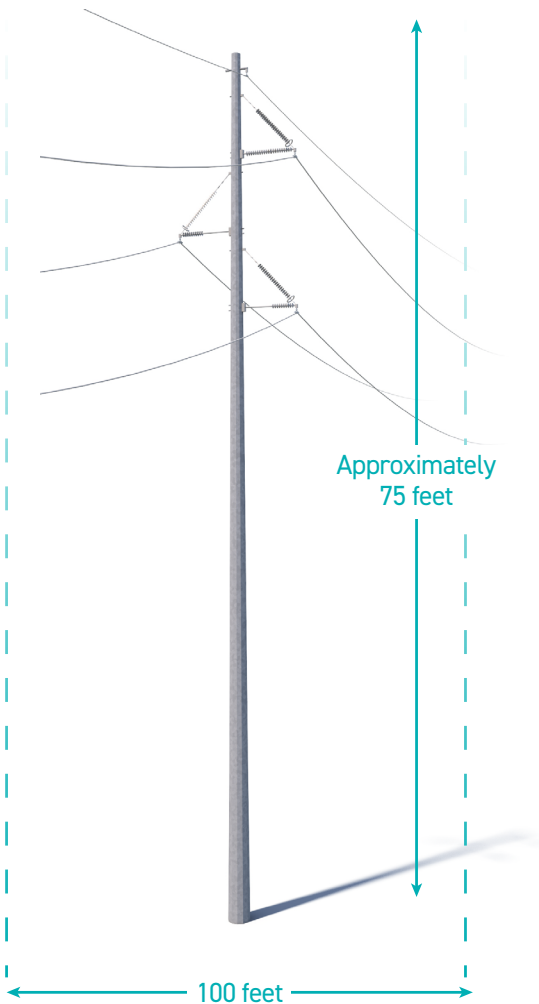
TYPICAL STRUCTURES

Typical Structure Height:
Approximately 75 feet

Typical Distance Between Structures:
Approximately 550 feet

Typical ROW Width: **100 feet**

*Exact structure, height and right-of-way requirements may vary



ATLANTA AREA TRANSMISSION IMPROVEMENTS PROJECT

- EXISTING TRANSMISSION LINE
- TRANSMISSION LINE TO BE REBUILT

▲ EXISTING SUBSTATION



SWEPCO VALUES YOUR INPUT ABOUT THIS PROJECT. PLEASE SEND COMMENTS AND QUESTIONS TO:

MATT HAMES

Project Outreach Specialist

918-237-6736

mchames@aep.com

[SWEPCO.com/AtlantaArea](https://www.swepcoco.com/AtlantaArea)

