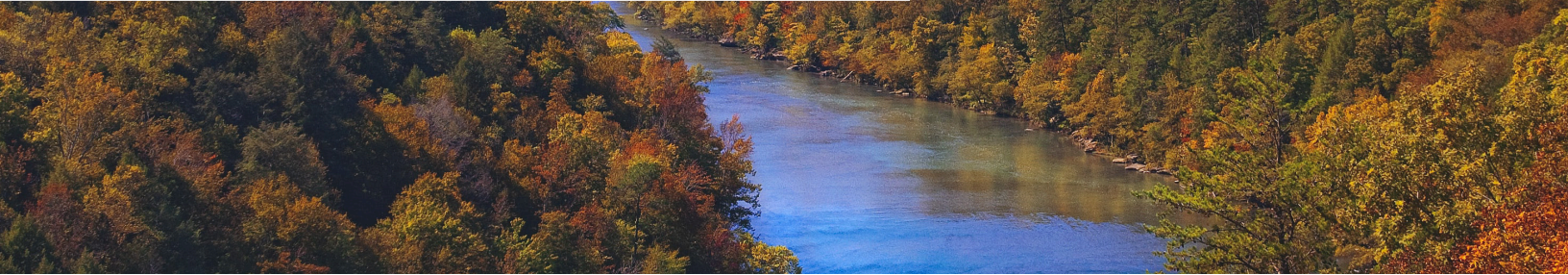


WOOTON-STINNETT

TRANSMISSION LINE REBUILD PROJECT



Kentucky Power plans to upgrade the electric transmission grid in Leslie County. The Wooton - Stinnett Transmission Line Rebuild Project involves rebuilding about 11 miles of 161-kilovolt (kV) electric transmission line to enhance electric reliability for area customers.



WHAT

The Wooton-Stinnett Transmission Line Rebuild Project involves:

- Rebuilding approximately 11 miles of 161-kV transmission line between the Wooton Substation and the Stinnett Substation within or near existing right-of-way
- Upgrading equipment at the Wooton, Leslie and Stinnett substations

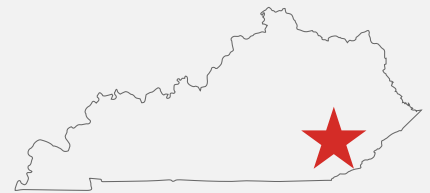
WHY

The project improvements:

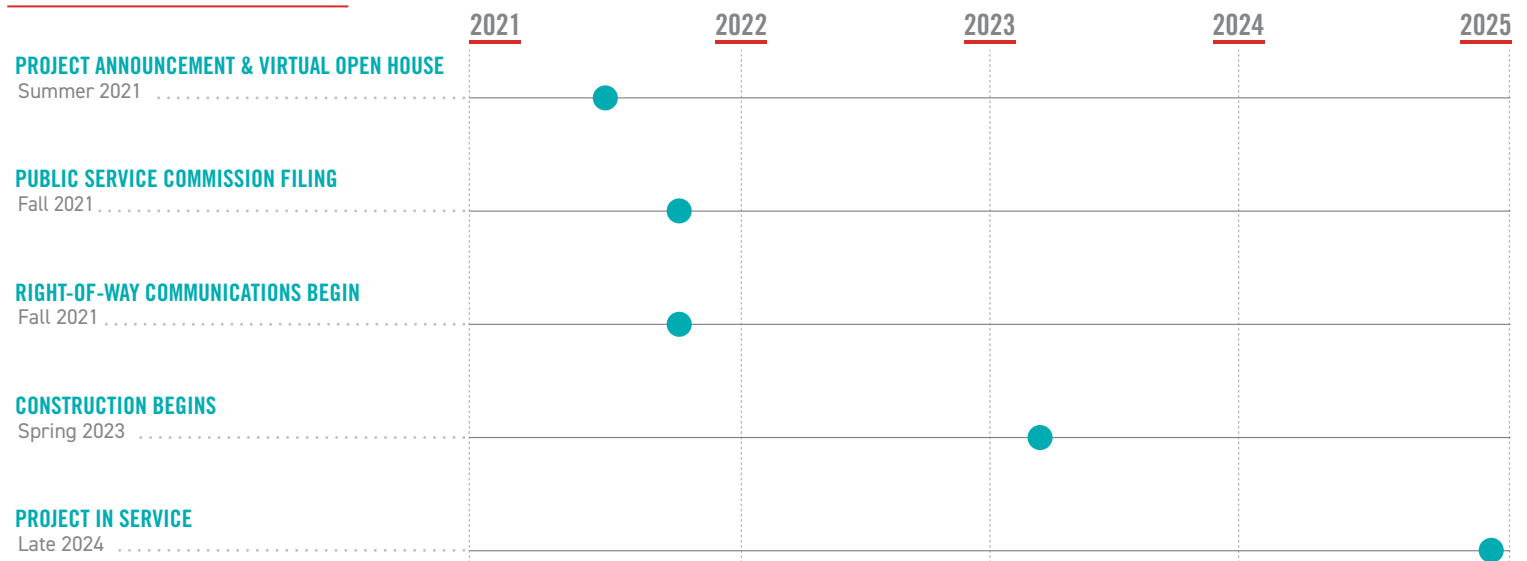
- Allow crews to replace deteriorating wooden poles from the 1940s with steel H-frame and lattice tower structures to ensure continued safe operation of the transmission line.
- Reduce the need for more frequent equipment maintenance and improve electric service reliability for area customers.

WHERE

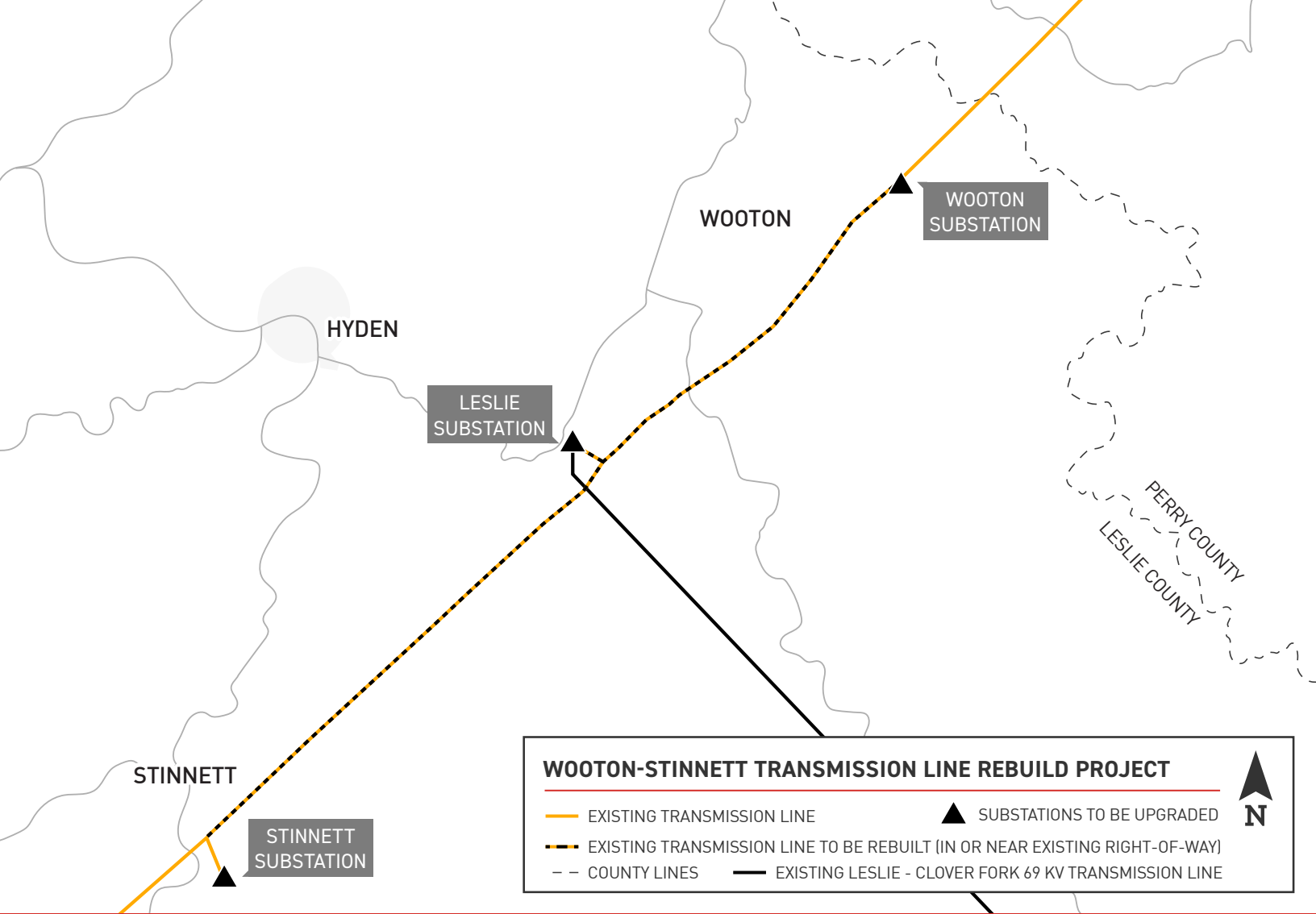
The project begins at the Wooton Substation on Wooton Creek Road in Wooton, continues south along Route 80 and connects with the Stinnett Substation near Greasy Creek Road in Stinnett.



PROJECT SCHEDULE



*Timeline subject to change.

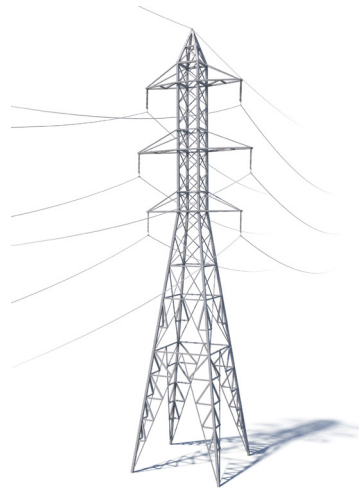


TYPICAL STRUCTURES

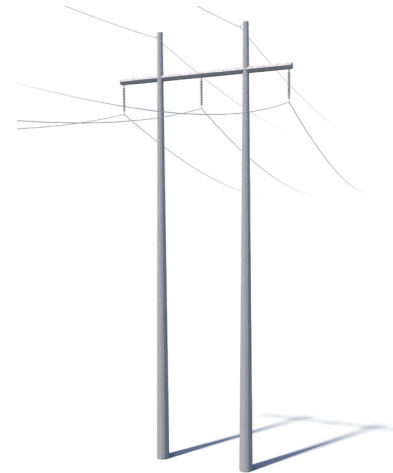
Crews plan to install steel H-frame and lattice tower structures along the line route.

Typical Structure Height: [Approximately 85 feet*](#)

Typical Right-of-Way Width: [Approximately 120 feet*](#)



LATTICE TOWER



H-FRAME

*Exact structure, height and right-of-way requirements may vary

KENTUCKY POWER VALUES YOUR INPUT ABOUT THIS PROJECT. PLEASE SEND COMMENTS AND QUESTIONS TO:

JULIET CAPEHEART

Project Outreach Specialist

833-760-0604

KentuckyPowerOutreach@aep.com

KentuckyPower.com/WootonStinnett

