

# TILLOTSON AVENUE TRANSMISSION LINE PROJECT

Indiana Michigan Power representatives plan power grid upgrades to improve electric reliability for customers in northwest Muncie. The Tillotson Avenue Transmission Line Project involves upgrading about 4 miles of transmission line and removing about 1 mile of transmission line.

## WHAT

The project involves:

- Rebuilding about 1 mile of underground transmission line on Tillotson Avenue between Bethel Substation, located near the intersection with W Riverside Avenue and Kenmore Substation, off North Elizabeth Avenue
- Upgrading about 3 miles of transmission line between Bethel Substation and Delaware Substation, off North Shaffer Road.
- Retiring about 1 mile of transmission facilities between Delaware Station and West Twickingham Drive. Lower-voltage distribution wires, third-party utilities and associated poles may remain.

## WHY

The project strengthens the local electric transmission system by replacing aging poles and wires that date back to the 1960s with modern equipment.

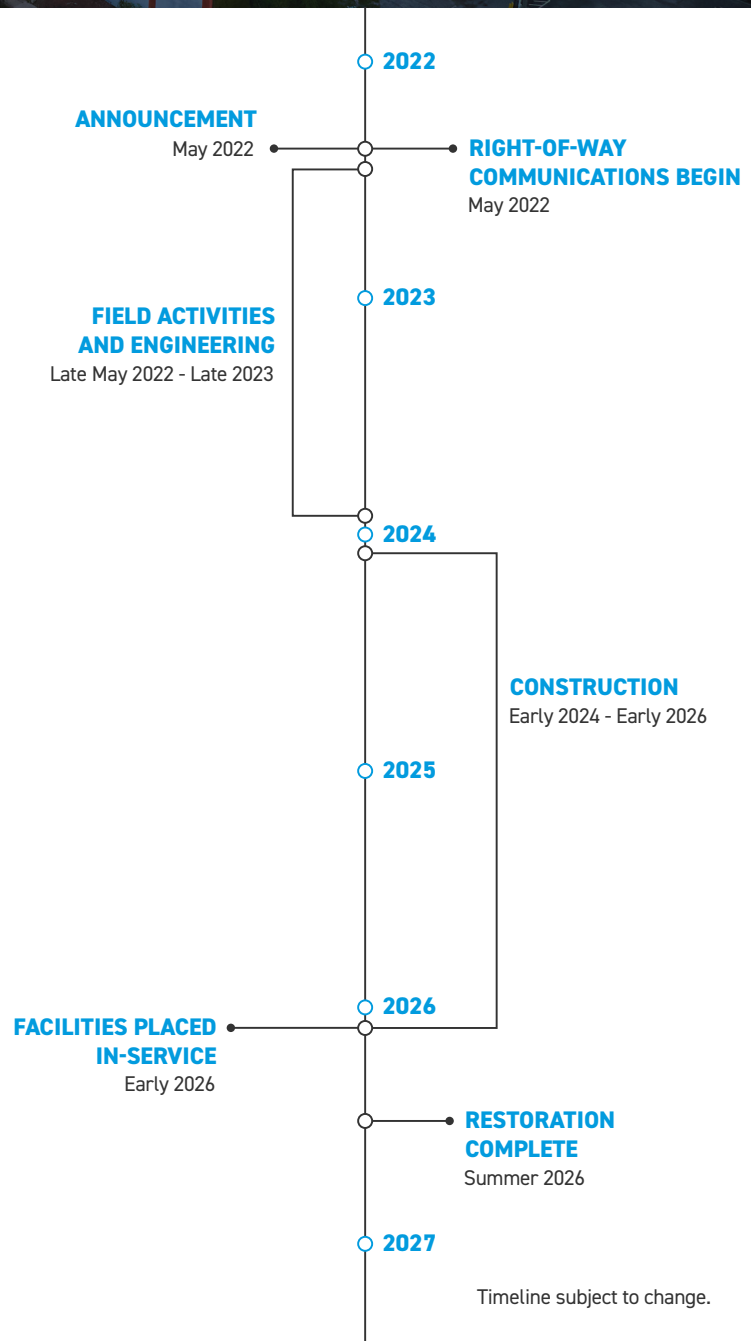
The aging underground facilities are difficult to identify and repair which often leads to prolonged power outages. The power line has experienced several of these extended power outages in recent years due to these issues.

The upgrades improve the line's operational performance, reduce the likelihood of extended power outages and enhance electric reliability for area customers.

## WHERE

The project area includes:

- City of Muncie
- Center and Hamilton townships in Delaware County

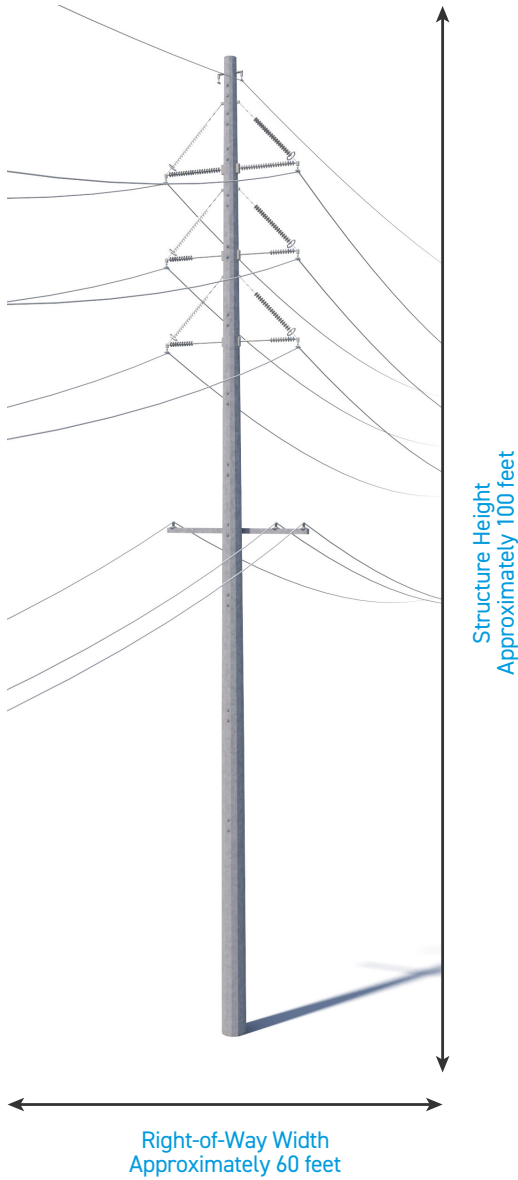


# TYPICAL STRUCTURES

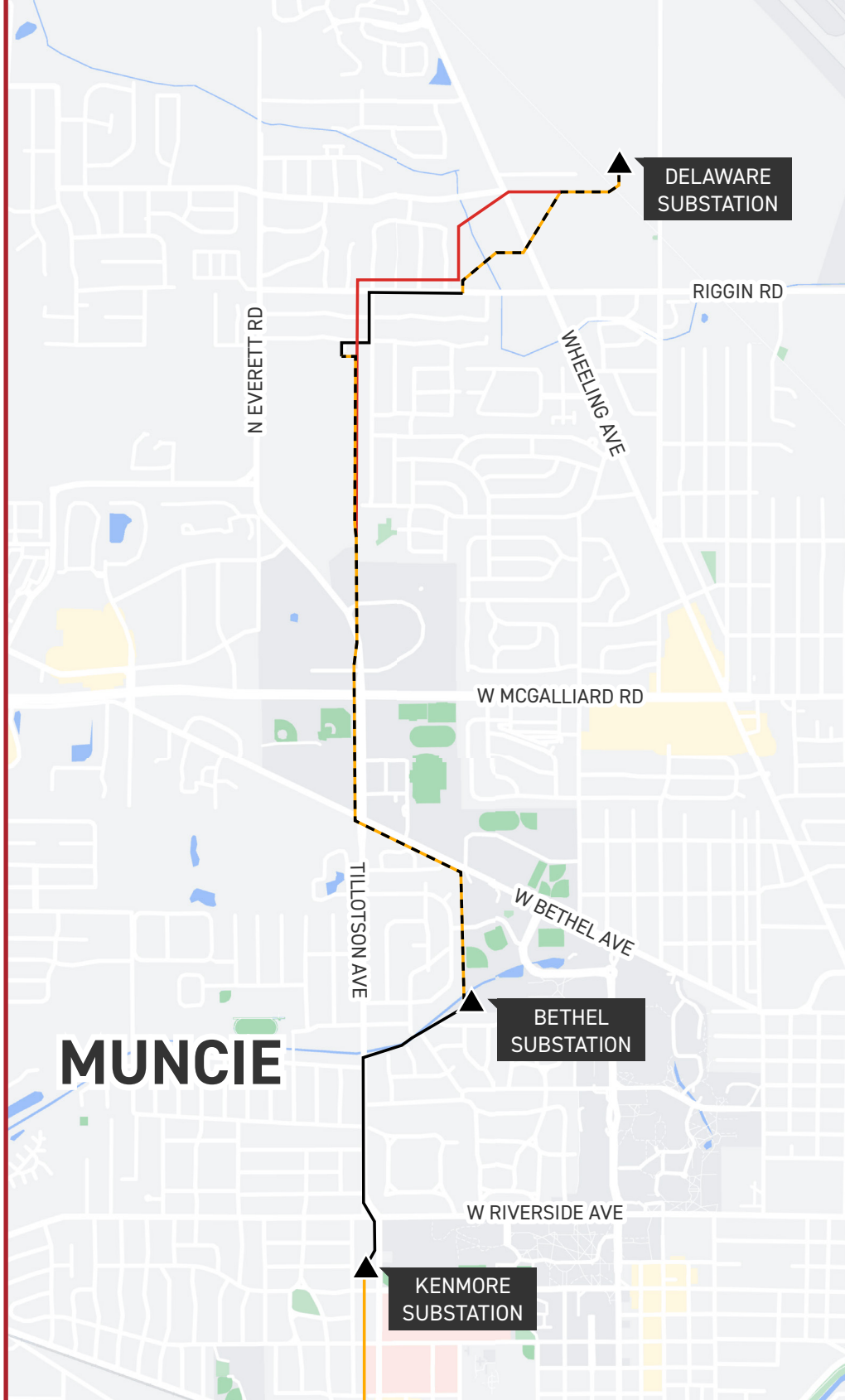
Sections of the project involve installing steel poles.

Typical Pole Height: **Approximately 100 feet\***

Typical Right-of-Way Width: **Approximately 60 feet\***



\*Exact structure, height, and right-of-way requirements may vary.



## TILLOTSON AVENUE TRANSMISSION LINE PROJECT

- TRANSMISSION LINE TO BE REMOVED
- TRANSMISSION LINE TO BE REBUILT
- UNDERGROUND TRANSMISSION LINE
- EXISTING TRANSMISSION LINE
- ▲ EXISTING SUBSTATION



**WE VALUE YOUR INPUT. PLEASE SEND COMMENTS AND QUESTIONS TO:**  
 KELLY FOLEY KRUSE · PROJECT OUTREACH SPECIALIST  
 KMFOLEYKRUSE@AEP.COM · 280-205-5314  
 INDIANAMICHIGANPOWER.COM/TILLOTSONAVENUE

